

Owyhee County FAIR & RODEO

FAIR RUNS THROUGH SATURDAY

HOMEDALE, OWYHEE COUNTY, IDAHO

RODEO DATES: TODAY THROUGH SATURDAY



Photo by WT Bruce Photography

Plenty to see at 2006 fair

Another Owyhee County Fair and Rodeo week has arrived.

And while some events have started already, things really get rolling today with the first day of popular entertainment, the opening of the commercial building and, of course, the start

of the four-day rodeo.

Thousands of fairgoers are expected to descend on Homedale this week. The fair opens at 8 a.m. each day with the commercial building opening at 11 a.m.

"We had some people do some estimates, and they come up with

11,000 over a six-day period, including the campers," fair secretary/manager Teri Nielsen said.

Live entertainment is planned each night in the Tumbleweed

— to page 2B



**I
n
s
i
d
e**

Rodeo preview

page 2B

A peek at Saturday's parade

page 2B

Daily fair schedule

page 3B

Meet Slash T Rodeo Co.

page 4B

Bill Bruce zooms in on rodeo

page 5B

Rodeo comforts Black family

page 6B

PUBLIC NOTICES AND CLASSIFIED ADS INSIDE, PAGES 10B-15B

Rodeo gets ready to rock

Nearly 400 competitors will go after a chunk of a \$35,000 purse beginning tonight in the annual Owyhee County Rodeo in Homedale.

Performances will be held each night through Saturday.

Gates open daily at 7 p.m. at the rodeo arena, with pre-rodeo events starting at 7:30 p.m.

The Idaho Cowboys Association-sanctioned rodeo action kicks off at 8 nightly.

The Owyhee rodeo is famous for its contests in ranch hand bronc riding, local team roping, junior steer riding, wild cow milking and wild horse racing.

The wild cow milking takes place Friday, and the wild horse race takes place Saturday.

Pre-rodeo events will include mutton bustin' each night, and rodeo secretary Ilene Canning said 4-year-old Marsing resident Lexie Loucks will sing the Star Spangled Banner each night.

Tickets for the covered grandstand are available for \$10 at Matteson's Phillips 66 in Homedale. Discount grandstand admission is \$8 today and Thursday, but tickets must be purchased in advance.

General admission tickets each night are \$8 for adults and \$5 for children 12-and-younger.



The (cool) place to be

With temperatures expected to hover in the mid-90s the rest of the week, the covered grandstand at the Owyhee County Fair and Rodeo arena will hold the most popular seats for the four-night run of the 2006 rodeo. Seats in the covered section cost \$10 each and are available at Matteson's Phillips 66 in Homedale. Spectators can get \$2 off the price of a covered section ticket for performances either tonight or Thursday when they purchase them in advance at Matteson's.

Parade brings out plenty of entries

With a theme like "Rock-a-Doodle-Do" and fair colors like lime-green and sky-blue, there really is no telling what decorations you might see Saturday during the Owyhee County Fair and Rodeo parade.

"It could be roosters. It could be bands. It could be rocks," parade coordinator Mary Tibbett said. "We come up with a lot of things in Owyhee County."

This year's parade will start at 10 a.m. Saturday on 4th Street East.

Paul's Markets founder Paul Zatica is this year's grand marshal.

The route heads south before turning west on to Idaho Avenue. Participants then head north on Third Street West then east onto Owyhee Avenue to wind back toward Homedale High School.

Registration, which is always free, begins at 8:30 a.m., and judging will be held at 9 a.m. Registration for horse-related entries takes place at the Deward Bell Stadium football field. Community floats will be registered in the Homedale High School parking lot. Antique car entries will be taken on Fourth Street East near the Homedale Electric warehouse, Tibbett said.

Tibbett also said that a color guard from Mountain Home Air Force Base will lead the parade.

"Please remember to tip your hats and salute the gentlemen in uniform," she said.

The fair board and rodeo board sponsor the parade, and cash prizes are available for best automobile, best float and the sweepstakes float for best decoration incorporating the fair's theme. Other prizes include a children's section, youth group contest and buggies and wagons.

Tibbett said this is her eighth year as parade superintendent, and that her staff helps make her most hectic day of the year run smooth.

"I have great, great, faithful volunteers that always help me," she said. "We gather for orange juice, donuts and coffee, and they just go out and do a great job for me."

And the quality of the parade is reflected in the size of the audience that is expected to line the streets again this year.

"The whole county gets involved in this," Tibbett said. "It's been a really good turnout. The crowd is bigger every year."

Welcome to the Owyhee County Rodeo!

Your Locally Owned & Operated Parts Store!



Event Sponsor:
Mutton Bustin'

Owyhee Auto Supply - Homedale
Lawson, Mike, Joy, Alisha, Anna, Kim, Mikal, Nestor, Jeremy & Brandon

Owyhee Auto Supply - Marsing
Dale • Sandy • Chad • Allen

FREE BATTERY,
ALTERNATOR
& STARTER TESTS

FREE
BATTERY
CHARGING

MACHINE SHOP
WE RESURFACE
DRUMS, ROTORS
AND FLYWHEELS

WE MAKE HYDRAULIC HOSES
IN STOCK: HEAVY DUTY TRUCK PARTS
AG BEARINGS • ROLLER CHAIN
WELDING GASSES & SUPPLIES



Owyhee Auto Supply
19 E. Idaho Ave • Homedale - 337-4668
202 Main St • Marsing - 896-4814

√ Fair

Theatre, including dances with live bands and a hypnotist each night.

"All we have to do is move the benches, and we have a great dance floor right there," Nielsen said.

Entries for flowers and leafy green vegetables and the A Bountiful Harvest contest will be taken at 8 a.m. today.

Throughout the week, 4-H and FFA members will show their animals in the Livestock Barn and in special events at the Tumbleweed Theatre for small animals, cats and dogs. The fair culminates for those children with the Owyhee County Junior Livestock Sale at noon Saturday in the Livestock Barn.

Other contests this week include:

- A cow pie eating contest at 7 p.m. today inside the Livestock Barn. There are categories for children 8 years old and younger, ages 9-14 and 15 and older.

- The Veggie People Making at noon Thursday.
 - The milk drinking contest at 7 p.m. Thursday inside the Livestock Barn. It has the same age groups as the cow pie eating contest.
 - A pie-baking contest at 11 a.m. Friday on the Tumbleweed Theatre stage. Contestants must bring their pies — already cooled — to the stage between 10 a.m. and 10:45 a.m.
 - Pedal Tractor Pull for children ages 5-11 at 2 p.m. Friday at the Tumbleweed Theatre.
 - Rain For Rent siphon tube-setting contest at 4 p.m. Friday behind the National Guard armory.
 - Roping contest at 7 p.m. Friday in the Livestock Barn. It's open to ages 9 and older.
- For complete guidelines for all contests, pick up a fair book at the offices of The Owyhee Avalanche, the fair office or the post offices in Marsing and Homedale.

"We have some cool things that are uniquely Owyhee County," Nielsen said.

Read all about it
in

The Owyhee Avalanche
337-4681

Fair schedule

Fairgrounds open each day at 8 a.m.

TODAY

8 a.m. — Ranch horse project, rodeo arena
11 a.m. — Commercial Building opens
1 p.m. — Rabbit and poultry show, Tumbleweed Theatre
1:30 p.m. — Goat show, Livestock Barn
2 p.m. — Exhibit Hall opens
3:30 p.m. — Dairy show, Livestock Barn
6 p.m. — Evening entertainment begins, Tumbleweed Theatre
7 p.m. — Gates open for Owyhee County Rodeo, rodeo arena
9 p.m. — Hypnotist Greg Hassikis, Tumbleweed Theatre
9 p.m. — Commercial Building closes
10:30 p.m. — Country music dance with Sevy Family Band from Marsing

Thursday

8 a.m. — Beef show, Livestock Barn
10 a.m. — Armory Exhibit Hall opens
11 a.m. — Commercial Building opens
1 p.m. — Cat show, Tumbleweed Theatre
1:30 p.m. — Dog show, Tumbleweed Theatre
3 p.m. — Small animal round robin, Tumbleweed Theatre
4 p.m. — Sheep show, Livestock Barn
6 p.m. — Evening entertainment begins, Tumbleweed Theatre
7 p.m. — Gates open for Owyhee County Rodeo, rodeo arena
9 p.m. — Hypnotist Greg Hassikis, Tumbleweed Theatre
9 p.m. — Armory Exhibit Hall closes
9 p.m. — Commercial Building closes
10:30 p.m. — Country music dance with Sunset Riders, Tumbleweed Theatre

Friday

8 a.m. — Swine show, Livestock Barn
9 a.m. — Light Horse and Mule Driving, rodeo arena
10 a.m. — Armory Exhibit Hall opens
11 a.m. — Commercial Building opens
11 a.m. — Pie-baking contest, Tumbleweed Theatre
4 p.m. — Siphon tube-setting contest, behind Armory
4 p.m. — 4-H and FFA livestock judging, Livestock Barn
6:30 p.m. — 4-H Style Revue, Tumbleweed Theatre
7 p.m. — Gates open for Owyhee County Rodeo, rodeo arena
8 p.m. — Hypnotist Greg Hassikis, Tumbleweed Theatre
9 p.m. — Armory Exhibit Hall closes
10 p.m. — Commercial Building closes
10:30 p.m. — DJ Teen Dance, Tumbleweed Theatre

Saturday

8:30 a.m. — Parade registration at three locations in Homedale
9 a.m. — Parade judging
10 a.m. — Owyhee County Fair and Rodeo Parade through Homedale
10 a.m. — Armory Exhibit Hall opens
11 a.m. — Round robin competition, Livestock Barn
11 a.m. — Commercial Building opens
Noon — Drill team competition, rodeo arena
Noon — Livestock buyers lunch, followed by Owyhee County Junior Livestock Sale and animal costume contest
5 p.m. — Hypnotist Greg Hassikis, Tumbleweed Theatre
7 p.m. — Gates open for Owyhee County Rodeo, rodeo arena
7 p.m. — Premium payout and 4-H and open class check, Armory Exhibit Hall
8 p.m. — Armory Exhibit Hall closes
9 p.m. — Hypnotist Greg Hassikis, Tumbleweed Theatre
9 p.m. — Armory Exhibit Hall closes
10 p.m. — Commercial Building closes
10:30 p.m. — Country music dance with Howlin' Coyotes, Tumbleweed Theatre

OVER 200 DIFFERENT STYLES
SOFAS, LOVESEATS, RECLINERS, SECTIONALS
& MORE! IN STOCK & WAREHOUSE PRICED!
HUGE SELECTION OF MICROFIBER
SOFA, LOVESEATS & SECTIONALS



LANE LEATHER RECLINER
\$499

LANE PAIR SPECIALS
2 FOR \$699

MIS-MATCH MATTRESS CLEARANCE!
QUEEN \$395⁰⁰
FULL or TWIN \$295⁰⁰
KING \$595⁰⁰

SECTIONAL WITH BUILT IN RECLINER & SLEEPER
OVER 10 COLORS IN STOCK!
WAREHOUSE PRICED!
\$1499⁰⁰

SECTIONAL WITH 2 BUILT IN RECLINERS & SLEEPER
BLUE, BROWN, BURGANDY & GREEN IN STOCK
\$2195⁰⁰

OVERSIZED COMFORT RECLINERS BY BEST CHAIRS
FABRIC \$499⁰⁰ LEATHER IN STOCK! MICROFIBER \$449⁰⁰

LANE LEATHER SECTIONALS
LARGE SELECTION • MOTION OR STATIONARY

NEW! 6'x9' Area Rugs from \$99

CHEST OF DRAWERS YOUR CHOICE... \$159

WHIRLPOOL OR KITCHENAID 25 CU. FT. REFRIGERATOR
ICE & WATER SALE PRICE \$1999
BLOWOUT SPECIAL: \$999⁰⁰
BLACK OR BISQUE LIMITED TO STOCK ON HAND

WHIRLPOOL SELF CLEANING OVEN
BLOWOUT SPECIAL: \$549⁰⁰
BISQUE ONLY

WINE COOLER SAVE 50%!
BLOWOUT SPECIAL: \$199⁰⁰
BLACK OR BISQUE ONLY

ESTATE BY WHIRLPOOL MICROWAVE/VENT HOOD
BLOWOUT SPECIAL: \$199⁰⁰
BISQUE ONLY SIMILAR TO ILLUSTRATION

WHIRLPOOL GLASS TOP COOKTOP \$399⁰⁰

KITCHENAID DOWNDRAFT COOKTOP
SALE PRICE \$999
BLOWOUT SPECIAL: \$699⁰⁰
LIMITED TO STOCK ON HAND

KITCHENAID DUAL CONVECTION OVEN
REG. PRICE \$2499
BLOWOUT SPECIAL: \$899⁰⁰
ALMOND ONLY

COMBINATION SAVINGS
DELUXE REFRIGERATOR 18 CU. FT.
ELECTRIC RANGE
DELUXE DISHWASHER
ALL 3 APPLIANCES: \$999/SET

FREE DELIVERY & SET-UP IN TREASURE VALLEY!

A Member of
nationwide west
\$8 Billion
Buying Power

Parma Furniture Co.
"Like Having A Friend At The Factory"
108 3rd St. • Parma, Idaho
722-5158 • toll free: 888-722-0078



Slash T Rodeo Co. fuels rodeo action again

Gooding family business celebrates 25 years of supplying stock for rodeos

The Gooding-based Slash T Rodeo Co., has been providing stock for rodeos throughout the West — including this year’s Owyhee County Fair and Rodeo — for 25 years.

But Juanita and Pat O’Maley — the Slash T company’s owners and operators — do more for the sport of rodeo than supply bulls and bucking horses. The O’Maleys are strong supporters of rodeo from every angle.

Last month’s Daniel Dopps Memorial Rodeo at Optimist Park in Mountain Home was the product of the family’s desire to place a rodeo in that community.

“Because we were good friends with Daniel Dopps and his family, we asked them if they would be interested in doing a memorial rodeo in memory of Daniel,” Juanita O’Maley wrote in an e-mail.

The Dopps rodeo, a Professional Rodeo Cowboys Association event held July 14-15, emerged from a conversation with Todd McCurry from the Mountain Home Auto Ranch car dealership during a meeting at a Chinese restaurant in Mountain Home. The rodeo honored the memory of the young bull rider who died

from injuries suffered at a Grace rodeo last year — one week before the Owyhee rodeo.

In addition to celebrating 25 years in the rodeo stock business, the O’Maleys recently marked their 40th wedding anniversary at — where else? — a rodeo in Glens Ferry. Their daughter, Patti, helps coordinate company stock at rodeos, too.

Pat O’Maley is no stranger to the business end of a bull, either. He won Idaho Cowboys Association bull riding championships in 1977 and 1971. Juanita and Pat won the ICA’s Ivin Pollard Award in 1996 and 1995, respectively.

Slash T animals to look for at the Owyhee County Rodeo beginning tonight include Oreo, a belted black and white bull that has been to the National Finals Rodeo and weighs in at more than a ton.

Snake Eater also makes an appearance. This bull scored 95 points to win highest-marked ride of the round with Terry Don West hanging on at the 2003 NFR.

Bucking stock Tall Timber, Pay Day, Strawberry Roan, Desperado and Northern Lights will be doing their stuff at the Owyhee Rodeo, too, either bucking off riders or



Slash T specialty

Above: A cowboy falls to the ground inside the Caldwell Night Rodeo arena after being thrown by a bull supplied by Gooding’s Slash T Rodeo Co. The CNR and the Owyhee County Rodeo are just two of many events for which Pat and Juanita O’Maley supply stock. Photo supplied by Slash T Rodeo Co. *Below:* The O’Maleys also were instrumental in putting on the inaugural rodeo held in memory of Daniel Dopps last month in Mountain Home.

taking them to the pay window.

Slash T has a long list of top bucking animals. A lot of bucking stock has been born into

the O’Maleys’ “Born to Buck” program, and the animals are doing a super job bucking, Juanita says. One such horse from that program is Ringtail, a 20-year-old horse that also has mothered other great bucking stock as Gone Wild.

The company had stock at Red Lodge, Mont., and will be

traveling to Barstow, Calif., later in September. Other rodeos for which the Idaho company has provided stock include the ICA Finals at the Idaho Center in Nampa, the Dodge Circuit Finals Rodeo in Pocatello, the Wrangler National Finals Rodeo in Las Vegas and the Wilderness Circuit Finals in Ogden, Utah.

PRIDE IN PERFORMANCE

FOR OVER 50 YEARS, LES SCHWAB HAS BEEN EARNING THE TRUST OF PEOPLE ALL OVER THE WEST. WITH OVER 385 LOCATIONS, THERE'S A LES SCHWAB TIRE CENTER NEAR YOU TO TAKE CARE OF ALL YOUR DRIVING NEEDS. THAT IS WHY WE TAKE "PRIDE IN PERFORMANCE"™

Tires

LES SCHWAB

HOMEDALE 337-3474 • MARSING 896-5824



Homedale photographer puts rodeo in focus

Jordan Valley native uses camera to continue his relationship with sport

The West runs thick in Bill Bruce's blood, and — as expected — so does family.

So when Bruce walked away from the Professional Rodeo Cowboys Association rodeo circuit to raise his family, he had to find another outlet for his passion for ropin' and ridin'.

Call it zoomin' and snappin'. "My kids were competing in rodeo, and I started taking pictures of them and it just kind of developed," said Bruce, who lives off U.S. Highway 95 between Homedale and Marsing.

What started as a way to fill the family photo album has turned into a business that Bruce loves.

He has been clicking photos at the Owyhee County Rodeo since 2000, one year after he started rodeo and western photography as a profession.

"It's just kind of being a part of it and everything," Bruce said of the draw of photography. "Being out in the arena and seeing the people you like to be around.

"When you get a good picture, it's like a good ride. You have to be in time with (the action) just like you would have to be in time with a horse. It's a good feeling."

Bruce has had plenty of opportunities to get that feeling since he began shooting rodeos in 1999.

He estimates he rolls up between 15,000 and 20,000 miles to visit about 50 rodeos each year, including the big ones like the Snake River Stampede in Nampa and the Caldwell Night Rodeo and Oregon's Pendleton Roundup.

Of all the shows to which he has put a flash, Bruce says he likes the Big Loop in Jordan Valley the best.

"I grew up there, and it's kind of a unique rodeo," he said.

His nephew, Josh Bruce, still calls Jordan Valley home and often rodeos on the Idaho Cowboys Association circuit, on which this week's Owyhee County Rodeo is a stop.

Bill Bruce made the jump in technology at the start of this season, acquiring a Nikon digital camera for his work.

That probably won't make the job of shooting inside the arena at Homedale any easier, though.

"Homedale is really, really tough to shoot because it gets dusty," Bruce said. "It's always a challenge."

He also photographs other Western events, including brandings, which he does from horseback. He has traveled to Australia and Canada to document horse trainer Ray Hunt's clinics.

Bruce has known horseback and rodeo all his life. His father, Cecil, supplied rodeo stock from his ranch on Mann Creek north of Weiser in the 1930s and 1940s.

Bill Bruce was born in 1959, the youngest of six children, and embarked on a rodeo career at an early age. He started in junior steer riding and worked his up to the ICA and PRCA.

He attended Treasure Valley Community College on a rodeo scholarship. His specialty was saddle bronc.

Bruce built an arena near the house he shares with his wife, Jaleene, and that arena serves as a practice grounds for area high school rodeo athletes. Bryan Martinat of Homedale High School used the arena to hone saddle bronc skills that carried him to a 12th-place finish in last month's National High School Finals Rodeo.

"My favorite rodeo event to shoot is the high school rodeo," Bruce said. "I like being around the kids and helping them and seeing them do good and watching them grow.

"There are kids that I was taking photos of in high school that are in the PBR (Professional Bull Riders) and PRCA now."

And chances are more cowboys will emerge as Bruce continues to fire his shutter.

"My goal is to be a part of rodeo the rest of my life," he said.



Owyhee County Rodeo revisited

Under his WT Bruce Photography banner, Homedale resident Bill Bruce has been photographing dozens of rodeos each year since 1999. In 2000, he began shooting images of the Owyhee County Rodeo, from which these two action shots emerged. Bruce grew up in Jordan Valley and competed in saddle bronc on the Professional Rodeo Cowboys Association for a few years. Photos by WT Bruce Photography

Owyhee Rodeo Board updates stock-holding area at arena



Members of the Owyhee County Rodeo Board spent a few work nights down at the rodeo arena during the heat wave in July making sure that the show will go off without a hitch this week.

The rodeo board and fair board financed the purchase of new rodeo panels for the loading pens outside the arena. Rodeo board members installed the green and brown panels in the weeks before the rodeo.

Rodeo board member Mike Matteson said the entire staging area for the rough stock animals has been revamped.



Rob Black, family ride on after tragedy

Owyhee native,
relatives return
for another
Owyhee rodeo

The Owyhee County Rodeo always has been a special time for Rob Black.

“It really is because it is one of the first ones I ever went to as a kid,” he said. “We were from Bruneau, it was the county fair and it was one of the first rodeos I ever entered.”

This year, the rodeo where the Owyhee County native cut his teeth holds even more meaning as the Black family continues to compete only weeks after the tragic death of his son, Blaise.

“It’s always one of my favorite rodeos because it’s one of the best ones of the year,” Rob Black said. “In the last five or six years, Blaise and I both placed at it really well. I won all-around a couple times.”

Blaise, who can be considered the catalyst for his father’s return to the rodeo circuit about eight years ago, died in an industrial accident in New Plymouth on July 7.

The Black family — Rob’s wife, Mikal, and daughters, Lindsay Marie and Marissa, and Blaise’s wife, Lindsay Lee — returned to the rodeo soon after Blaise’s funeral.

They’re a rodeo family. It’s what rodeo families do.

“It’ll be very special, of course,” Rob said of the Owyhee rodeo. “One of the big reasons is we always went as a family anyway, and it seems like now — the weekend after Blaise’s funeral — the girls all wanted to go to rodeos that we were entered in.”

“The girls” have been doing quite well in 2006 rodeos. Marissa competed in the National College Finals Rodeo for Montana State University in the spring, and all four placed in breakaway roping during a July 21-22 swing through Idaho Cowboys Association



Former tie down champion honored by ICA

Former Owyhee County resident Blaise Black, shown during the Idaho City rodeo last year, won the 2005 Idaho Cowboys Association tie down roping championship. The 25-year-old Meridian resident died in an industrial accident in New Plymouth last month, and the ICA has named the saddle awarded to its season tie down roping champ in memory of Black. Photo by WT Bruce Photography

‘We worked hard and played hard. All him and I had always really done is worked on business things. ... Rodeo was always in there because that’s what we do.’

— Rob Black
on his relationship with his late son, Blaise

rodeos in St. Anthony, Oakley and Carey. Rob said Marissa came out on top in St. Anthony and Carey.

The Black family will be out in force at the Owyhee rodeo. Rob said most of the family is scheduled to compete on the same night this year. Rob is joining his nephew, Mark, in team roping. Rob says his brother, Tim, and nephew Brady also will compete in Homedale. Brady is a Homedale

High School graduate.

Rob and Mark finished second in team roping in St. Anthony and split third and fourth in Glens Ferry on July 28-29. Rob won the tie down roping 18/40 title at St. Anthony. Rob and Mark finished first and second, respectively, in tie down at Glens Ferry.

Rob Black has been a fixture on the ICA circuit stretching back to the late 1970s. He won the circuit’s team roping championship with

Sam Mackenzie in 1978, and pulled off that feat again 23 years later in 2001 with Blaise. That same year, Rob won his third ICA all around crown with Blaise being named reserve champion.

And Rob insists that the Homedale stop always is a key element to his championship runs.

But if it weren’t for Blaise, Rob never may have returned to the rodeo arena after winning the ICA all around in 1980.

“I didn’t rodeo for 17 years,” Rob said. “Then when Blaise got to high school, we got Blaise a roping horse and I got my knee operated on so I could rodeo again.”

Rob and his son periodically partnered in team roping, finishing third at the ICA Finals at Nampa’s Idaho Center last October. Blaise won last year’s ICA tie down

roping title, which Rob had collected in 2000.

The ICA has named the saddle it awards to its season tie down roping champion in honor of Blaise. Rob recently was ranked as high as third in the season standings for the event.

“One of my goals would be to win the year-award, and Homedale is a big part of it,”

Just like rodeo was a big part of Blaise’s life and continues to be a focal point for the entire Black family.

“It’s just kind of what we did,” Rob said of his strong bond with his son. “We worked hard and played hard. All him and I had always really done is worked on business things, cleaning up things — we buy and sell real estate.

“Rodeo was always in there because that’s what we do.”

**Dedicated to the
Health of Your Farm**

Welcome Rodeo fans!

Farm Bureau
Insurance Companies

Wayne Hungate
Agent

Dave Cereghino
Property & Casualty Specialist

15 E. Wyoming
Homedale, Idaho

Office: 337-4041

Life • Auto • Commercial
Farm • Health • Home

USEcologyIdaho
an American Ecology company

**WELCOME TO THE
OWYHEE COUNTY
FAIR & RODEO**

**Protecting People
& The Environment**

US Ecology, Inc.
PROUDLY SERVING
50 YEARS
INDUSTRY & GOVERNMENT

Homedale seniors present Buckaroo Breakfast again

The Homedale Senior Citizens Center’s annual Buckaroo Breakfast roared out of the chute Tuesday for a five-day run in downtown Homedale. The meal always is held in conjunction with the Owyhee County Fair and Rodeo each August.

The breakfast, which has been a longtime fund-raiser for the center, will be held from 7 a.m. to 10 a.m. today through Saturday in the senior center parking lot at 224 W. Idaho Ave.

The menu includes hotcakes, sausage, eggs and a drink, either coffee, milk or orange drink.

The cost is \$5 for adults and \$2 for children younger than 12.

Senior center coordinator Shirley McAbee said last week that Just Country, a group of western Treasure Valley musicians, will provide live country-western music each day at breakfast.

Last year’s tseries of breakfasts attracted more than 1,000 diners and raised about \$4,000 for the center after expenses, McAbee said.

For more information, call the senior center at (208) 337-3020.



Hypnotist presents encore performances

Treasure Valley hypnotist Greg Hassakis makes a return to the Tumbleweed Theatre this year at the Owyhee County Fair. Hassakis will appear for nightly performances today and Thursday at 9 and Friday at 8 p.m. He has shows at 5 p.m. and 8 p.m. on Saturday. Other events scheduled for the Tumbleweed Theatre include nightly dances. On Wednesday, the Sevy Family Band from Marsing will perform, while another country music band, the Sunset Riders, takes the stage Thursday. Friday, fairgoers can dance to DJ music, and a Saturday country family dance with music from the Howlin’ Coyotes also is planned.



Old and new sights

Above: The Owyhee County Fair and Rodeo sign showed up near the intersection of Idaho Avenue and 4th Avenue West on Monday morning.

Below: Burton Post and Pole provided the materials and labor to build a new beer garden in the rodeo arena.





Matteson's
OWYHEE MOTOR SALES Est. 1952

C-STORE • GAS •
SPORTING GOODS
FISH & GAME LICENSING
FUEL DELIVERY
WILDER - FOOD STORE
HOMEDALE -
FULL SERVICE AUTO
REPAIR & TOWING

We're Proud to Support the Owyhee County Fair & Rodeo!



Homedale - 337-4664
Mike, Rhonda, Nolene,
Sunny, Crystal, Ricardo
Wanda, Jim, Kim, Nick,
Paul, Mike, Jeff, Jason



Wilder - 482-9210
Jamie • Luci • Kay • Margaret • Gabriel •
Krystena • Martha

Owyhee Restaurant

Rodeo Week Specials

BREAKFAST SPECIAL:
Bacon, Sausage Patty or Links,
2 eggs, toast & Hashbrowns \$3.99

RODEO WEEK SPECIALS:
Biscuits & Gravy
Available from 7 am to 11 am
1/2 Order: \$1.99
Full Order: \$2.99

DINNER SPECIALS (5pm to Closing):
T-Bone Steak 6oz. \$10.95 •
Sirloin & Shrimp \$12.95

OPEN MONDAY - THURSDAY 7 AM TO 9 PM
FRIDAY & SATURDAY 7 AM TO 10 PM
SUNDAY 7 AM TO 2 PM

208-337-3757

ICA handed out first rodeo titles 50 years ago

Owyhee County has provided great competitors over the years

The Owyhee County Rodeo is one of nearly 60 events sanctioned by the Idaho Cowboys Association during the 2006 rodeo season.

The ICA serves as a sanctioning body for rodeos not only in Idaho, but also in Oregon, Nevada and Washington state. The ICA season will end this year on Oct. 6-7 with the ICA Finals rodeo at the Idaho Center in Nampa.

According to the 2006 ICA schedule, which can be found on the organization's Web site at www.icarodeo.com, this week's rodeo in Homedale is the only such Owyhee County event sanctioned by the ICA this year.

The ICA was created a half-century ago to promote the sport of rodeo. The circuit's list of champions stretch back to 1956.

Through the ICA, rodeos attract bigger crowds and cowboys and cowgirls compete for larger prize-money pools.

All rodeos sanctioned by the ICA meet standards set to enhance the quality of the rodeo, the talent of all competitors and the safety of the rodeo stock.

Most rodeos approved by the

ICA average three performances and attract about 1,500 spectators for each day of action. Many rodeos in July and August — like the Owyhee County Rodeo — are held in conjunction with county fairs.

The ICA membership is dotted with folks from all walks of life. Some are professional cowboys who enjoy following a rodeo circuit that keeps them close to home. Others are businessmen and businesswomen, ranchers, farmers and horse trainers.

After a half-century of sanctioning rodeos, the association has earned a reputation for producing top cowboys and has been a proving ground for many professional cowboys.

And Owyhee County has been a big part of that.

Names like Rob and Blaise Black, Luke and Joel Jeffries, Tim and Jackie Roeser, Mike Pendergrass, Richard and Jason Eiguren Sam Mackenzie Sr., and Bryan Martinat pepper the ICA championship scrolls, and many more compete at a high level today.

The Owyhee County stop on the ICA circuit is exemplary of that sanctioning body's quest to preserve the spirit of the Old West through decades of rodeo tradition.

— *Some excerpts taken from the Idaho Cowboys Association Web site.*



Crowd favorite

Bull riding long has been a staple for the Idaho Cowboys Association. Mike Sparks takes a ride during the 2004 Owyhee County Fair and Rodeo. The Owyhee rodeo has been a big part of the ICA circuit, too. At least six cowboys with ties to the Owyhee area have won the association's all around championship.

Old Fashioned Barn Dance

at *Mount Royal Ranch*

August 19th
8pm–Midnight
Live DJ!!
No-Host Bar, Snacks

Western theme!
Dance lessons at 7pm–\$10.

All ages, families (and singles) Welcome!

Previews of this year's horses for sale available!

208.722.7112 • www.MountRoyalRanch.com

Mount Royal Ranch Events for August

Sunday	Monday	Tuesday	Wednesday	Thursday	Friday	Saturday
30	31	1 Team Penning: 7pm	2	3 Team Roping Practice: 7pm	4	5 Kids Day Camp! 10–5
6	7	8 Team Penning: 7pm	9	10 Team Roping Practice: 7pm	11	12 Play Day: 9am
13	14	15 Team Penning: 7pm	16	17 Team Roping Practice: 7pm	18	19 <i>Barn Dance!!</i>
20	21	22 Team Penning: 7pm	23	24 Team Roping Practice: 7pm	25	26 Play Day: 9am
27 Jackpot Roping! Trophy Buckles 7pm	28	29 Team Penning: 7pm	30	31 Team Roping Practice: 7pm	1	2
3	4	<ul style="list-style-type: none">• Pre-register for Kids Day Camp• Open riding in the arena from 11am to 1pm Tue, Wed and Thurs \$2 per hour• Rent the arena for your group \$50 for 2 hours, call for availability• Horse rental available, riding lessons available				

Barn Dance: Live DJ, No-Host Bar, Check website details!


Mount Royal Ranch • In Parma, off Apple Valley Road between Roswell & Sharp
PO Box 656 • Parma, Idaho 83660 • ph. 208.722.7112 • www.MountRoyalRanch.com

FALL HORSE SALE - SEPTEMBER 16 SEE WEBSITE FOR DETAILS

We'll See YOU

at the

Owyhee County Fair & Rodeo!



BOWEN & PARKER
CPA'S CHARTERED

19 East Wyoming
P.O. Box 905
Homedale, ID 83628
(208) 337-3271



Waiting 'til the last minute to advertise?

Deadline is Friday at noon!

The Owyhee Avalanche

Since 1865

Owyhee County Fair & Rodeo

Owyhee County Fairgrounds

Homedale, Idaho

AUGUST 9, 10, 11 & 12

Gates open at 7:00 • Rodeo at 8:00

FOR RODEO INFO OR TO REGISTER FOR THE RODEO, CALL 455-7922

FOR OWYHEE COUNTY FAIR INFO, CALL 337-3888

Presented By

Quality Motors

FOX 12
K T R V



WT Bruce Photos

SSI FOOD SERVICES, LLC

Rodeo Admission

Covered \$10.00

General \$8.00

12 & Under \$5.00

Covered section tickets
available at

Matteson's Phillips 66, Homedale 337-4664

General admission
available at the gate

SENIOR NIGHT!

**WEDNESDAY & THURSDAY NIGHT,
SENIORS GENERAL ADMISSION
ONLY \$5.00**

**Buy Your Tickets Early
& Save \$\$\$!**
Wednesday & Thursday
Covered Section Tickets
\$2.00 OFF
When purchased in advance

ICA Rodeo

Bull Riding • Roping Events • Bronc Riding • Barrel Racing

OVER \$35,000 IN PRIZE MONEY!

SPECIAL FEATURES: Mutton Busting

Wild Cow Milking Friday Night only

Wild Horse Race Saturday Night only

Kids' Steer Riding

Ranch Hand Bronc Riding

FAIR & RODEO PARADE

SATURDAY, AUGUST 12 • 10 AM DOWNTOWN HOMEDALE

BUCKAROO BREAKFAST

HOMEDALE SENIOR CENTER

EXHIBITS • FOOD BOOTHS • BEER GARDENS

FREE PARKING • FREE FAIR ADMISSION

FUN FOR THE WHOLE FAMILY!

4-H & FFA JUNIOR LIVESTOCK SALE

NOON - SATURDAY - AUGUST 12

usbank
First Star Service Guaranteed

Classic Trailer Sales

WSI
WESTERN STOCKMEN'S
"A Longhorn Company"

NAPA AUTO PARTS

ALLIANCE
TIRE & SERVICE CENTER

Tires LES SCHWAB

Martins
HANDWARE & PUMP

HOMEDALE DRIVE-IN

BOWEN & PARKER
FURNITURE

FARMERS & MERCHANTS
A BANK OF THE CASCADES COMPANY

Hobbs Electric

CAMPBELL TRACTOR CO

BURTON POST & POLE

PAUL'S

ZIONS BANK

INDART FARMS

Franklin
BUILDING SUPPLY



Auto Body by Alan



Jackson's

66 Matteson's

Agri-Lines Irrigation

PERFECTION REPAIR

ICB
A Division of Portland State Bank

REECE DISTRIBUTING

Public notices

**NOTICE OF PUBLIC HEARING
BEFORE THE OWYHEE COUNTY BOARD OF COMMISSIONERS
AS TO STATUS OF WILSON CEMETERY AND NIGHT HAWK LANES LOCATED IN OWYHEE COUNTY**

Pursuant to Idaho Code, Sections 40-203A and 40-203, the Owyhee County Board of Commissioners will hold a public hearing on August 21, 2006, at 1 PM in Courtroom #2, Owyhee County Courthouse, to inquire into the status as a private or public road or RS 2477 right of way, those roads which have been used for vehicular travel that are commonly known as “Wilson Cemetery Lane” and “Nighthawk Lane,” and are located in Section 11, Township 1 South, Range 3 West, Boise Meridian, Owyhee County, Idaho.

The disputed portion of Wilson Cemetery Lane begins at its intersection with Highway 78 and continues to Wilson Cemetery. Nighthawk Lane intersects with Wilson Cemetery Lane approximately one-eighth of a mile west of the intersection of Highway 78 and Wilson Cemetery Lane and travels in a southwesterly direction within Section 11, Township 1 South, Range 3 West.

A Hearing Officer has been named to conduct the hearing, conduct any pre-hearing procedures and assist the Board in post hearing actions. Questions as to procedure can be directed to Fred Grant, Hearing Officer by calling Kay Kelly at 495-9851 or 249-6267.

At the hearing, public testimony will be taken, so long as the testimony is relevant to issues involved in the determination of whether the road in question is a public road, private road or an RS 2477 right of way.

If any person or organization intends to be represented by counsel, notice of counsel’s name, address and telephone number should be provided to the Hearing Officer as soon as possible so that arrangements for scheduling pre-hearing conferences regarding procedures, marking documents and pre-hearing briefs can be made. Notices should be sent to the Hearing Officer at P.O. Box 128, Murphy, Idaho 83650 or faxed to 495-2051.

Any member of the public, not represented by counsel should follow the procedure set forth in the foregoing paragraph.

Notice of intent to be present to testify and present exhibits shall identify the name of the person to testify, the nature of testimony to be provided and identification of any documents which will be offered as evidence. Notice of representation or exhibits to be presented must be received by August 11, 2006.

7/19:8/9/06

NOTICE OF PUBLIC HEARING

Please be advised that a public hearing will be held before the Homedale Mayor and City Council on the 24th day of August, 2006, at 7:30pm at Homedale City Hall, 31 West Wyoming, Homedale, Idaho. The subject matter of the public hearing is the Zone Change Application filed by Robert J. and Judith C. Rose. Mr. and Mrs. Rose are seeking to rezone the property located at 2 S. 2nd Street W., Homedale, Idaho, legally known as Block 43, Lot 3, Amended Plat of Homedale,

Owyhee County, Idaho, from commercial to residential. That certain parcel is presently being used as a pasture and the Roses (or their daughter) intend to build a house on this parcel.

Susan Mansisor, City Clerk
City of Homedale
8/9,16/06

**NOTICE OF HEARING
CASE NO. CV-06-05540
IN THE DISTRICT COURT
FOR THE THIRD JUDICIAL DISTRICT OF
THE STATE OF IDAHO AND
IN FOR THE COUNTY OF OWYHEE**

IN RE: Christopher Edward Rae Bryant

A Petition by Christopher Edward Rae Bryant, born on 1/23/88 in Roseville, State of California now residing at 315 Patton St, Marsing, proposing change in name to Christopher Edward Rae Covey has been filed in the above entitle court, the reason for this change in name being I was abandoned by my natural father and Chuck Covey guardian has been my father.

The petitioner’s father is living.

Such petition will be heard at 11:30 o’clock am on August 28, 2006, in courtroom number 1 at the Owyhee County Courthouse. Objections may be filed by any person who can, in such objections, show to the court a good reason against such a change of name.

WITNESS my hand and seal of said District Court this 25th day of July, 2006.

By Charlotte Sherburn, Deputy Clerk
8/2,9,16,23/06

**PETITION FOR NAME CHANGE (MINORS)
CV-2006-05622H
IN THE DISTRICT COURT
FOR THE THIRD JUDICIAL DISTRICT OF
THE STATE OF IDAHO AND
IN FOR THE COUNTY OF OWYHEE**

IN RE: Jennifer Marie Gleason and Laura Katherine Gleason, Legal Names of Children.

Lisa Katherine MacKenzie, PO Box 165, Jordan Valley, OR 97910

I swear under oath: I am the parent of the above children. My full legal name and current residence are listed above.

Jennifer Marie Gleason born 12/5/89 in the city of Reno, County of Washoe, State of Nevada, and resides at 2920 S. Harbor Ave., Caldwell, ID 83605. I want to change her name to Jennifer Marie Jewett.

Laura Katherine Gleason born 10/1/91, in the city of Sparks, County of Washoe, State of Nevada, and resides at 1323 Arlington Ave., Caldwell, ID 83605. I want to change her name to Laura Katherine Jewett.

The children’s father is not living and the names and addresses of his near relatives are: Leonard Gleason, Fallon, Nevada.

The children’s mother is living.

I want to change the children’s names because they want to retain the mothers maiden name.

The name changes are not to avoid creditors or outstanding debts. None of these children is required to register as a convicted sexual offender under Chapter 83, Title 18, Idaho Code, or under the provisions of similar laws enacted by another state.

I ask that a Deputy Clerk of the Court issue a Notice of Hearing

**NOTICE OF PUBLIC HEARING
PROPOSED BUDGET FOR FISCAL YEAR 2006/2007 (FY 07)
CITY OF MARSING, IDAHO**

Notice is hereby given that a public hearing, pursuant to Idaho Code 50-1002, will be held for consideration of the proposed budget for the fiscal year from October 1, 2006 to September 30, 2007. The hearing will be held at City Hall, Marsing, Idaho at 7:00 p.m. on Wednesday, August 9, 2006. All interested persons are invited to appear and show cause, if any, why such budget should or should not be adopted. Copies of the proposed City budget in detail are available at City Hall at 425 Main Street in Marsing, Idaho during regular office hours (8:00 a.m. to 5:00 p.m. - weekdays). City Hall is accessible to person with disabilities. Anyone desiring accommodations for disabilities related to budget documents or to the hearing, please contact City hall at 896-4122 at least forty-eight (48) hours prior to the public hearing. The proposed FY2007 budget is shown below as the FY2007 proposed expenditures and revenue.

PROPOSED EXPENDITURES:			
<i>Fund Name:</i>	<i>FY 04/2005 Budget Expenditures</i>	<i>FY 05/2006 Budget Expenditures</i>	<i>FY 06/2007 Proposed Expenditures</i>
General Fund:			
General & Admin.	\$128,550.	\$208,425.	\$210,526.
Law Enforcement	\$69,000.	\$69,000.	\$72,000.
Capital Outlay Project	\$320,787.	-0-	-0-
General Fund Totals:	\$518,337.	\$277,425.	\$282,526.
Roads & Street Fund:	\$101,449.	\$100,232.	\$113,484.
Park Fund:	22,430.	20,656.	\$20,388.
Sewer Fund:	306,000.	\$408,200.	\$368,500.
Irrigation Fund:	34,950.	31,428.	\$40,980.
Sanitation Fund:	58,000.	58,000.	\$65,000.
Planning & Zoning:	12,500.	9,100.	28,600.
Water Fund	240,060.	310,800.	511,000.
Fund Totals:	\$775,389.	\$938,416.	\$1,147,952.
Water Bond USDA LOAN	-0-	1,700,000.	1,700,000
Water USDA –RD GRANT	-0-	425,000.	540,000.
Water Grant ICDBG	-0-	436,762.	432,000.
Water Grant	-0-	-0-	500,000.
Water DEQ Grant	-0-	-0-	11,000.
Sewer Revenue Bond USDA	250,000.	-0-	50,000.
Special Funds Totals:	\$250,000.	\$2,561,762.	\$3,233,000.
Grand Totals:	\$1,543,726.	\$3,777,603.	\$4,663,478.

<i>Fund Name:</i>	<i>FY04/2005 Budget Revenue</i>	<i>FY 05/2006 Budget Revenue</i>	<i>FY06/2007 Proposed Revenue</i>
Property Tax Levy:			
General Fund	\$61,448.	\$63,291.	\$79,976.
Roads & Streets Fund	21,099.	21,732.	22,384.
Park Fund	7,530.	7,756.	7,988.
Foregone Amount	9,862.	13,434.	-0-
Total Property Tax:	\$99,939.	\$106,213.	\$110,348.

Revenue Sources Other Than Property Tax:			
Penalty & Interest on Taxes	\$1,700.	\$1,700.	\$1,700.
Licenses & Permits/Fees	22,340.	9,440.	30,790.
State Liquor Apportionment	20,000.	20,000.	20,000.
Court Revenue	10,000.	10,000.	10,000.
State Sales Tax	38,500.	22,000.	37,500.
State Revenue Sharing	20,000.	20,000.	27,000.
Highway, Street & Bridge	37,500.	37,500.	48,000.
Sewer Revenue	146,000.	152,000.	210,000.
Water Revenue	162,760.	264,419.	341,000.
Capital Outlay Project	320,787.	-0-	3,000.
Land Rental	500.	1,700.	-0-
Gem Irrigation Taxes	26,000.	27,309.	37,580.
Sanitation Collection	58,000.	58,000.	65,000.
Interest Earnings	5,850.	8,000.	17,500.
Misc. Revenue/County	55,050.	9,000.	10,560.
Due From Other Governmental	278,800.	2,626,322.	3,240,000.
Cash Carryover & Transfers	265,000.	404,000.	453,500.
Total Other Revenue:	\$1,468,787.	\$3,671,390.	\$4,553,130.
Grand Total:	\$1,568,726.	\$3,777,603.	\$4,663,478.

The proposed expenditures and revenues for fiscal year 2006-2007 have tentatively approved by the City Council and entered in detail in the Journal of Proceedings. Publication dates for the Notice of Public Hearing are August 2, 2006 and August 9, 2006 in the Owyhee Avalanche, Marsing, Idaho.

Janice C. Bicandi
Marsing City Clerk/Treasurer
8/2,9/06

to be published for four (4) successive weeks in the Owyhee Avalanche a newspaper printed in the County; and the Judge sign an Order changing the children’s names as I have asked.

Date: July 17th, 2006
By: /s/ Lisa K. MacKenzie
8/2,9,16,23/06

PUBLIC NOTICE

The Board of Education of Joint School District No. 365, Bruneau-Grand View School District No. 365, Bruneau-Grand View, Idaho, shall receive comments from tribal officials and parents of Native American children at its regularly scheduled meeting, August 17, 2006, 7 p.m., Rimrock Jr./Sr. High School. The Board will address the participation of Native American children on an equal basis in the educational programs and the district’s Impact Aid Program Application.

A copy of the Impact Aid Program Application will be sent to any parent of a Native American child who requests it

in writing. Anyone wishing to address the Board should contact Superintendent Vickie Chandler at 834-2253 to request to be on the agenda.

Catherine R. Sellman
Clerk of the Board
8/9/06

NOTICE OF SALE

NOTICE is hereby given that the Board of Trustees of Joint School District No. 365, Owyhee & Elmore Counties, pursuant to Section 33-601, Idaho Code, as amended, has determined that it is in the best interest of said school district to sell the property as identified below. An appraisal of school property as stated below has been duly made.

Description of property to be sold is as follows: 1988 Ford Bluebird School Bus, Mileage 180,480 VIN # 1FDXJ75P8JVA23763

Said property will be sold by sealed bids only for not less than the appraised value.

The Board of Trustees reserves the right to reject any or all bids.

Sealed bids will be opened at the regular board meeting on August 17, 2006 at Rimrock Jr.-Sr. High School, 7 p.m. Any bids received after the bid opening will not be considered.

The property to be sold may be inspected at Rimrock Jr.-Sr. High School, by contacting Robert Lemieux at Jumbo’s Auto Supply in Bruneau or Jim Dawson at the School District Office.

Catherine R. Sellman, Clerk
Joint School District No. 365
Owyhee/Elmore Counties, Idaho
P. O. Box 310
Grand View, ID. 83624
8/2,9/06

Buy it, sell it,
trade it, rent it...
in the

Classifieds!

Public notices

**NOTICE OF SALE
CASE NO. CV-06-05481
IN THE DISTRICT COURT
OF THE THIRD JUDICIAL
DISTRICT
OF THE STATE OF IDAHO,
IN AND FOR THE COUNTY
OF OWYHEE**
CITIMORTGAGE, INC.,
successor in interest to Principal
Residential Mortgage, Inc.,
Plaintiff,
Vs.
JAMES H. CONRAD
(Deceased) and/or the Unknown
Heirs, Assigns & Devisees of
James H. Conrad; and DOES 1-10
as individuals with an interest in
the real property legally described
as:

Lot 20 in Block 9 of the Sunset
Ranch Subdivision, part of the
north half of the Southeast quarter
and the Southwest quarter of the
Northeast quarter of Section 36,
Township 4 North, Range 6 West,
Boise Meridian, Owyhee County,
Idaho, according to the official
plat thereof and of record in the
office of the recorder for Owyhee
County, Idaho.

Commonly known as: Route
1, Box 3026, Homedale, Idaho,
83628.

Defendants.
Under and by virtue of an
Order of Sale of Foreclosure
entered on July 13, 2006 and
Writ of Execution issued on July
13, 2006 out of and under the
seal of the above-entitled Court
on the Judgment and Decree of
Foreclosure recovered in said
Court in the above-entitled action
on the 13th day of July, 2006,
in favor of the above-named
Plaintiff, I am commanded and
required to proceed to notice for
sale to sell at public auction the
real property described in said
Order for Sale of Foreclosure and
Writ of Execution and to apply
the proceeds of such sale to the
satisfaction of said Judgment
and Decree of Foreclosure with
interest thereon and my fees and
costs.

The property directed to be
sold is situate in Owyhee County,

State of Idaho, and is described as
follows, to-wit:

Lot 20 in Block 9 of the Sunset
Ranch Subdivision, part of the
north half of the Southeast quarter
and the Southwest quarter of the
Northeast quarter of Section 36,
Township 4 North, Range 6 West,
Boise Meridian, Owyhee County,
Idaho, according to the official
plat thereof and of record in the
office of the recorder for Owyhee
County, Idaho.

Commonly known as: Route
1, Box 3026, Homedale, Idaho,
83628.

NOTICE IS HEREBY GIVEN
that on the 24th day of August,
2006 at the hour of 11:00 o'clock
a.m., at the location of Owyhee
County Courthouse 20381 State
Hwy 78, Murphy, ID, I will
attend, offer and sell at public
auction all or so much of the
above-described property thus
directed to be sold as may be
necessary to raise sufficient funds
to pay and satisfy the Judgment
and Decree of Foreclosure as
set out in said Order for Sale of
Foreclosure to the highest bidder
therefore in lawful money. The
time period for redemption of the
above property is six (6) months
from the date of sale herein.

The Sheriff, by a Certificate of
Sale, will transfer right, title and
interest of the judgment debtor in
and to the property. The Sheriff
will also give possession but
does not guarantee clear title nor
continue possessory right to the
purchaser.

DATED This 28th day of July,
2006.

GARY AMAN, OWYHEE
COUNTY SHERIFF

By: /s/ Richard Freund, Deputy
Sheriff

Lance E. Olsen/ ISB #7106
Derrick J. O'Neill/ ISB #4021
ROUTH CRABTREE OLSEN,
PS

225 North 9th St., Ste 800
Boise, Idaho, 83701
Phone: 208-489-3035
Fax: 208-331-1529
Attorneys for Plaintiff
8/2,9,16/06

NOTICE

NOTICE IS HEREBY GIVEN, that a special meeting of the
qualified voters of the Eastern Owyhee County Library District will be
held on the 15th day of August, 2006 at 6:00pm at the Eastern Owyhee
County Library in said library district at 520 Boise Avenue, Grand View,
ID at which meeting there will be a public hearing on the maintenance
and operations budget for the forthcoming year. This special meeting
is called pursuant to Sec. 33-2713-A IC as amended.

BUDGET

**EASTERN OWYHEE COUNTY LIBRARY
OCT. 1, 2006 – SEP. 30, 2007**

REVENUES	2005-2006	2006-2007
Property Taxes	\$25,331.00	\$26,090.93
New Construction	100.00	100.00
Sales Tax	9,000.00	9,000.00
Equip. Replacement	2,616.00	2,616.00
Memorials & Gifts	100.00	100.00
Miscellaneous	100.00	100.00
TOTAL	\$37,247.00	\$38,006.93
EXPENDITURES		
Salaries	\$14,000.00	\$14,600.00
Books	7,200.00	7,500.00
Supplies	1,400.00	1,100.00
Technology	880.00	880.00
Contingency	267.00	826.93
Election & Expenses	400.00	400.00
Equipment	1,200.00	800.00
Fixed Charges	2,600.00	2,600.00
Insurance	1,800.00	1,800.00
Legal Service	200.00	200.00
Maintenance	2,000.00	2,000.00
Operation of Plant	4,900.00	4,900.00
Travel & Training	400.00	400.00
TOTAL	\$37,247.00	\$38,006.93

Dated this 19th day of July, 2006
By order of the Board of Trustees
Eastern Owyhee County Library
Kathy L. Chick, Clerk
Frances Field, Chairman
8/2,9/06

**NOTICE OF PUBLIC HEARING:
Proposed Budget of the Fiscal Year 2007 (FY 07)
City of Grand View, Idaho**

Notice is hereby given that a public hearing, pursuant to Idaho Code 50-1002, will be held for
consideration of the proposed budget for the fiscal year from October 1, 2006 to September 30, 2007. The
hearing will be held at City Hall, 425 Boise Ave, Grand View, Idaho at 7:00 pm on Wednesday August 9, 2006.
All interested persons are invited to appear and show cause, if any, why such budget should or should not be adopted.
Copies of the proposed City budget in detail are available for current charge per copy at City Hall at
425 Boise Ave. in Grand View, ID during regular office hours 8:00 am to 5:00 pm - Monday, Tuesday & Wednesday.
City Hall is accessible to persons with disabilities. Anyone desiring accommodations for disabilities related to
budget documents or to the hearing, please contact City Hall at 834-2700 at least twenty-four hours (24)
prior to public hearing. The proposed FY 2007 budget is shown below as the proposed expenditures and revenues.

City of Grand View Expenditures	FY 2005 Approved Budget City Exp	FY 2006 Approved Budget City Exp	FY 2007 Proposed Budget City Exp
Account Payable Name:			
Administration:	\$8,700.00	\$9,600.00	\$9,600.00
Auto - Purchase / Maintenance / Fuel / Oil	\$2,350.00	\$1,100.00	\$2,000.00
Backhoe Maintenance	\$200.00	\$600.00	\$600.00
Capital Outlay	\$1,500.00	\$1,500.00	\$1,500.00
City/City Park Maint/Supplies/Repairs/Equip/Tools/Parts	\$2,000.00	\$1,500.00	\$1,500.00
Contingency Fund	\$2,000.00	\$2,000.00	\$2,000.00
Dues	\$950.00	\$800.00	\$800.00
Election Supplies	\$150.00	\$900.00	\$900.00
Engineering & Surveying	\$2,500.00	\$2,500.00	\$3,000.00
Fire Hydrant / Supplies	\$800.00	\$800.00	\$800.00
Insurance / Bonds / Workman's Compensation	\$3,000.00	\$3,000.00	\$3,000.00
Miscellaneous Expenses	\$500.00	\$700.00	\$700.00
Office Supplies / Postage / Safe Dep Box Fee	\$1,500.00	\$1,500.00	\$1,750.00
Petty Cash	\$100.00	\$100.00	\$100.00
Professional Services: Accounting / Legal	\$2,000.00	\$1,600.00	\$1,600.00
Publication	\$1,400.00	\$1,483.00	\$1,483.00
Seminars	\$300.00	\$200.00	\$200.00
Utilities - Power / Phone / Dumpster Service	\$3,000.00	\$2,800.00	\$2,800.00
Total City Expenditures	\$32,950.00	\$32,683.00	\$34,333.00

City Revenue Funds	FY 2005 Approved Budget City Rev	FY 2006 Approved Budget City Rev	FY 2007 Proposed Budget City Rev
City Business Liquor License	\$1,450.00	\$1,350.00	\$1,350.00
Interest (Investment Pool / Bank)	\$100.00	\$100.00	\$100.00
Miscellaneous Revenue	\$1,800.00	\$1,800.00	\$800.00
State Liquor Allotment	\$7,000.00	\$4,500.00	\$4,287.00
State Revenue Sharing	\$12,000.00	\$12,810.00	\$13,919.00
State Sales Tax Revenue	\$3,300.00	\$3,814.00	\$5,337.00
County Warrant: Grand View Tax Levy & Ag	\$4,824.00	\$5,779.00	\$6,010.00
City Revenue	\$30,474.00	\$30,153.00	\$31,803.00

City Carry / Over Funds:	Approved Budget City C/O '05	Approved Budget City C/O '06	Proposed Budget City C/O '07
Investment Pool	\$2,227.00	\$2,278.00	\$2,363.00
Checking Account	\$249.00	\$252.00	\$167.00
Total City Carry / Over Funds:	\$2,476.00	\$2,530.00	\$2,530.00
Total Anticipated City Rev & C/O	\$32,950.00	\$32,683.00	\$34,333.00

City of Grand View - Street & Road Exp.	FY 2005 Approved Budget St & Rd Exp	FY 2006 Approved Budget St & Rd Exp	FY 2007 Proposed Budget St & Rd Exp
Account Payable Name:			
Administration - Payroll Reimbursement			
- Wages for Supervisor	\$3,200.00	\$3,200.00	\$3,200.00
- Wages for Maint. Assistant	\$11,957.00	\$12,000.00	\$12,000.00
Auto - Purchase / Maintenance / Fuel / Oil	\$2,000.00	\$1,000.00	\$1,000.00
Backhoe / Mower / Tractor Maintenance	\$1,000.00	\$1,000.00	\$1,000.00
Capital Outlay	\$5,000.00	\$5,000.00	\$5,000.00
Contingency Fund	\$1,000.00	\$1,000.00	\$1,000.00
Miscellaneous Expense	\$500.00	\$500.00	\$500.00
Professional: Accounting / Legal	\$1,300.00	\$1,300.00	\$1,300.00
Repairs & Maintenance - Streets / Safety	\$4,000.00	\$3,578.00	\$4,000.00
Street Signs / Signing	\$1,000.00	\$1,000.00	\$1,000.00
Surveying	\$2,000.00	\$2,000.00	\$2,000.00
Tools & Equipment	\$500.00	\$500.00	\$500.00
Utilities: Street Security Lighting	\$2,000.00	\$2,000.00	\$2,756.00
Total Street & Road Expenditures	\$35,457.00	\$34,078.00	\$35,256.00

St & Rd Revenue	FY 2005 Approved Budget St & Rd Rev	FY 2006 Approved Budget St & Rd Rev	FY 2007 Proposed Budget St & Rd Rev
HUR - State Highway Users Fund	\$19,000.00	\$18,426.00	\$19,052.00
Idaho Power Franchise	\$5,600.00	\$5,000.00	\$5,000.00
Interest (Investment Pool / Bank)	\$375.00	\$170.00	\$300.00
Grand View Tax Levy	\$0.00	\$0.00	\$0.00
Total St & Rd Revenue	\$24,975.00	\$23,596.00	\$24,352.00
St & Rd Carry Over	Approved Budget St&Rd C/O '05	Approved Budget St&Rd C/O '06	Proposed Budget St&Rd C/O '07
Investment Pool	\$8,866.00	\$9,090.00	\$9,407.00
Checking Account	\$1,616.00	\$1,392.00	\$1,497.00
Total St & Rd Carry Over	\$10,482.00	\$10,482.00	\$10,904.00
Total Anticipated St&Rd Rev & C/O	\$35,457.00	\$34,078.00	\$35,256.00

The proposed expenditures and revenues for Fiscal Year 2007 have tentatively approved by the
City Council and entered in detail in the Journal of Proceedings. Publication dates for the Notice of Public
Hearing are August 2, 2006 and August 9, 2006 in the Owyhee Avalanche, Homedale, Idaho.

Helana (Lani) Race	City	\$34,333.00
Grand View City Clerk / Treasurer	St/Rd	\$35,256.00
8/2,9/2006	City & St/Rd Total	\$69,589.00

Owyhee Publishing Co. Inc.

Quality Web Printing

208.337.4866

Public notices

NOTICE OF BUDGET HEARING

The Commissioners of the HOMEDALE RURAL FIRE PROTECTION DISTRICT have tentatively adopted the 2006-2007 budget for said district as set forth below. A public hearing for the adoption of such budget will be held at the office of Owyhee Lanes & Restaurant, 18 W 1st., Homedale, Idaho at 12:00 p.m. on Monday, August 14, 2006. Such budget may be examined at the above mentioned location prior to the hearing.

Homedale Rural Fire Protection District
Homedale, Idaho 83628
Proposed Budget
Oct. 1, 2006 to Sept. 30, 2007

Revenue	
Beginning Fund Balance	\$225,000.00
Property Tax – Owyhee	112,075.00
Property Tax – Canyon	52,997.00
Ambulance Payments	42,000.00
Interest Income – Checking	25.00
Interest Income – Investment	3,500.00
Permits	1,500.00
License Plates Ambulance	600.00
Marcus Aldacosia	100.00
Penalties & Interest – Owyhee	1,000.00
Sales Tax Surplus – Owyhee	27,000.00
Ag Replacement – Owyhee	4,500.00
Penalties & Interest – Canyon	500.00
Ag Replacement – Canyon	1,400.00
Sales Tax Surplus – Canyon	1,900.00
Sales Tax Excess – Canyon	800.00
Tax Prepays – Canyon	500.00
Tax Circuit Breaker	900.00
Rent Income	7,200.00
Total Revenue & Beginning Fund Balance	\$483,497.00
Expenditures	
Employer FICA Expense	\$6,179.29
SUTA Expense	1,040.00
FUTA Expense	807.75
Fire – Supplies	6,000.00
Ambulance – Supplies	7,500.00
Ambulance – Gas, Oil & Tires	2,000.00
Fire – Gas, Oil & Tires	2,500.00
Fire – Dues	2,500.00
Wages	80,775.00
Insurance	8,500.00
Fire – Firemen’s Expense	1,200.00
Ambulance – Attendant’s Expense	1,200.00
Ambulance – School & Training	2,500.00
Fire – School & Training	2,000.00
Legal	4,500.00
Accounting	11,000.00
Audit Expense	2,750.00
Professional Billing Services	4,500.00
Office Supplies	2,500.00
Lifeflight	1,750.00
District – Building Improvement & Maintenance	3,000.00
Ambulance – Equipment	10,000.00
Fire – Equipment	193,600.00
Ambulance – Repair & Maintenance	2,500.00
Fire – Repair & Maintenance	20,000.00
Property Taxes	1,800.00
Ambulance – Telephone	850.00
Fire – Telephone	850.00
District – Telephone	1,300.00
Cell Phones	1,300.00
Utilities	6,000.00
Canyon County Paramedics – Collection	3,500.00
Contingency Fund	25,000.00
Total Expenditures	\$421,402.04
Ending Fund Balance	\$62,094.96
Total Expenditures & Ending Fund Balance	\$483,497.00
8/9/06	

NOTICE OF PUBLIC HEARING

Public Notice is Hereby Given, that the Board of Fire Commissioners for the Murphy-Reynolds-Wilson Fire District of Owyhee County. Will hold a tentative budget hearing for the fiscal year 2006-2007.

Anticipated Revenue	
Cash – Capital Reserve	\$22,120
Estimated Sales Tax Surplus	4,800
Ag. Equip. Tax Replacement	1,605
Property Taxes	27,953
Total	\$56,478
Anticipated Expenditures	
Wages	\$3,600
Operation & Maintenance	25,500
Capital Exp.	27,378
Total	\$56,478
A Hearing is set for Thursday, August 24, 2006 from 7:00 to 9:00 P.M. at the Murphy Fire Station.	
Charlene Nettleton, Treasurer	
8/9,16/06	

SUMMONS FOR PUBLICATION
CV. NO. CV05-00266-S-BLW
UNITED STATES DISTRICT COURT FOR THE DISTRICT OF IDAHO
UNITED STATES OF AMERICA, Plaintiff,
Vs.
THE UNKNOWN HEIRS,

DEVISEES, SUCCESSORS IN INTEREST AND CLAIMANTS TO THE ESTATE OF CHARLES W. STEINER, DECEASED, et, al, Defendants.
WILLIAM W. STEINER and PHYLLIS RUSSELL STEINER, Crossclaimants,
Vs.
SAMUEL STEINER, et, al,

Crossdefendants.
To the above-named Defendants:

The Unknown Heirs, Devisees, Successors in Interest and Claimants to the Estate of Charles W. Steiner, Deceased John Doe Agents, Employees or Contractors of Carol Gilbert

YOU ARE HEREBY SUMMONED and required to serve upon Amy S. Howe, Assistant United States Attorney for the District of Idaho, an answer to the Amended Complaint filed in the above captioned court within 20 days after service of this Summons for Publication upon you, exclusive of the day of service. If you fail to do so, judgment by default will be taken against you for the relief demanded in the Amended Complaint. This is an action to foreclose a certain real estate mortgage encumbering real property situate in Owyhee County, Idaho, and farm equipment and livestock located in the State of Idaho, described in the attached Exhibits A and B, respectively.

DATED this 11th day of July, 2006.

CAMERON S. BURKE
Clerk of the Court
By Jamie Gearhart, Deputy Clerk

PARCEL NO. 1:
IN TOWNSHIP 7 SOUTH, RANGE 2 WEST, BOISE MERIDIAN, OWYHEE COUNTY, IDAHO.

Section 30: South One-Half of the Northeast Quarter, Southeast Quarter of the Northwest Quarter, East One-Half of the Southwest Quarter, North One-Half of the Southeast Quarter, Southwest Quarter of the Southeast Quarter, West One-Half of the Southeast Quarter of the Southeast Quarter, Lots 2, 3 and 4 Less: Triangle Ranch Plats 2 and 3, recorded March 9, 1982 as Instrument No. 171995, Owyhee County Records.

Section 31: Lots 1 and 2, South One-Half of the Northeast Quarter of the Northeast Quarter, Northwest Quarter of the Northeast Quarter of the Northeast Quarter, Northwest Quarter of the Northeast Quarter, East One-Half of the Northwest Quarter.

Section 32: Northeast Quarter of the Northeast Quarter, East One-Half of the Northwest Quarter of the Northeast Quarter, Southeast Quarter of the Northeast Quarter, Southwest Quarter of the Southeast Quarter, Southwest Quarter.

IN TOWNSHIP 7 SOUTH, RANGE 3 WEST, BOISE MERIDIAN, OWYHEE COUNTY, IDAHO

Section 25: East One-Half, East One-Half of the Northwest Quarter, Northwest Quarter of the Northwest Quarter, Northeast

Quarter of the Southwest Quarter, Less Triangle Ranch Plat 1, recorded March 9, 1982 as Instrument No. 171993, Owyhee County Records.

IN TOWNSHIP 8 SOUTH, RANGE 2 WEST, BOISE MERIDIAN, OWYHEE COUNTY, IDAHO

Section 4: South One-Half of the Southwest Quarter

Section 5: Lots 2, 3 and 4, South One-Half of the Northeast Quarter, South One-Half of the Northwest Quarter, South One-Half of the Southwest Quarter, Northwest Quarter of the Southwest Quarter, South One-Half of the Southeast Quarter, Northeast Quarter of the Southeast Quarter

Section 9: West One-Half

Section 15: West One-Half, West One-Half of the East One-Half, East One-Half of the Northeast Quarter, Northeast Quarter of the Southeast Quarter

Section 17: West One-Half, West One-Half of the Southeast Quarter

Section 20: Northwest Quarter, West One-Half of the East One-Half, East One-Half of the Southeast Quarter

Section 22: West One-Half of the East One-Half, Southeast Quarter of the Southeast Quarter

Section 29: East One-Half, South One-Half of the Northwest Quarter

Section 30: Southeast Quarter of the Northeast Quarter, Northeast Quarter of the Southeast Quarter

Section 32: Northeast Quarter
Section 33: West One-Half of the Southwest Quarter

IN TOWNSHIP 9 SOUTH, RANGE 2 WEST, BOISE MERIDIAN, OWYHEE COUNTY, IDAHO

Section 4: Lots 4, 5, 11 and 12, Southwest Quarter

Section 5: Lots 1, 8 and 9

Section 9: North One-Half of the Northwest Quarter; Northwest Quarter of the Northeast Quarter

PARCEL NO. 2:

Tracts 1, 2, 3, 4, 5 and 6 of the TRIANGLE RANCH PLAT 1, situated in Northeast Quarter, Northeast Quarter of the Northwest Quarter, Section 25, Township 7 South, Range 3 West, and Government Lot 2, Section 30, Township 7 South, Range 2 West, Boise Meridian, Owyhee County, Idaho, according to the official plat thereof on file and of record in the office of the Recorder for Owyhee County, Idaho.

Tracts 41 and 42 of TRIANGLE RANCH PLAT 2, situated in Government Lot 2, Southwest Quarter of the Northeast Quarter, Southeast Quarter of the Northwest Quarter, Northeast Quarter of the Southwest Quarter, Northwest Quarter of the Southeast Quarter, Section 30, Township 7 South, Range 2 West, Boise Meridian, Owyhee County, Idaho, according

to the official plat thereof on file and of record in the office of the Recorder for Owyhee County, Idaho.

PARCEL NO. 4:
Tract 40 of TRIANGLE RANCH PLAT 2, situated in Government Lot 2, Southwest Quarter of the Northeast Quarter, Southeast Quarter of the Northwest Quarter, Northwest Quarter of the Southeast Quarter, Section 30, Township 7 South, Range 2 West, Boise Meridian, Owyhee County, Idaho, according to the official plat thereof on file and of record in the office of the Recorder for Owyhee County, Idaho.

Tract 43 and 49 of TRIANGLE RANCH PLAT 3, situated in South One-Half of the Northeast Quarter, North One-Half of the Southeast Quarter, Section 30, Township 7 South, Range 2 West, Boise Meridian, Owyhee County, Idaho, according to the official plat thereof on file and of record in the office of the Recorder for Owyhee County, Idaho.

Tract 55 of TRIANGLE RANCH PLAT 3, situated in South One-Half of the Northeast Quarter, North One-Half of the Southeast Quarter, Section 30, Township 7 South, Range 2 West, Boise Meridian, Owyhee County, Idaho, according to the official plat thereof on file and of record in the office of the Recorder for Owyhee County, Idaho.

PARCEL NO. 5:

Tracts 45 and 46 of TRIANGLE RANCH PLAT 3, situated in South One-Half of the Northeast, North One-Half of the Southeast Quarter, Section 30, Township 7 South, Range 2 West, Boise Meridian, Owyhee County, Idaho, according to the official plat thereof on file and of record in the office of the Recorder for Owyhee County, Idaho.

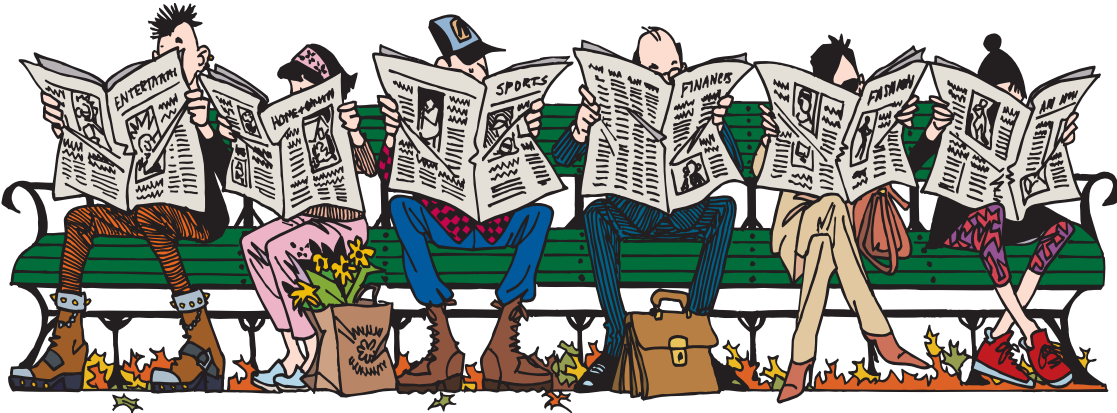
1 Tractor, AC, WD-45, 1954, S/N 187851; 1 Tractor w/loader, Case, 580ck, 1960, S/N 8309900; 1 Backhoe, Case 33, 1960, S/N 413; 1 Backhoe, Case 33, 1960, S/N 524; 1 Loader, Case H-48-33, 1960, S/N 4145360; 1 Hay Unroller, Vemeer; 1 Ditcher, Chattin, 6’; 1 Hydroloader; 1 Feedbox, Parma, S/N 1467801; 55 Cows, Mixed; 3 Heifers, Mixed; 8 Calves, Mixed; 8 Bulls, Mixed

Thomas E. Moss, Idaho Bar No. 1058

United States Attorney
Amy Howe, Idaho Bar No. 3385

Assistant United States Attorney
District of Idaho
Washington Group, Plaza IV
800 Park Blvd., Ste 600
Boise, ID 83712
Phone: (208) 334-1211
Fax: (208) 334-1414
7/26;8/2,9,16,23,30/06

Wednesday morning in Owyhee County



That’s when the Owyhee Avalanche hits the news stands

Public notices

NOTICE OF PUBLIC HEARING

Please be advised that a public hearing will be held before the Homedale Mayor and City Council on the 24th day of August, 2006 at 7:30pm at Homedale City Hall at 31 W Wyoming Homedale, Idaho. The subject matter of the public hearing is the zoning map changes to include the new designation of property to be annexed as follows:

PROPERTIES TO BE ANNEXED

- 1. Tax 62 consisting of 19.767 acres, located on the south side of Industrial Road and on the east side of Highway 95.

Owner: Ben C. Badiola and Lori L. Badiola, husband and wife (See No. 1 on Map A)

- 2. Tax 1B consisting of 9.36 acres, located on the west side of Highway 95 and south of Industrial Road

Owner: Amalgamated Sugar Company (See No. 2 on Map A)

Described as:

The part of the SW1/4NW1/4, Section 10, T3N, R5W of the Boise Meridian lying West of the proposed Highway 95 and East of the O.S.L.R.R.O.S.

- 3. Owner: Ricardo Uria and Terri K. Uria, husband and wife, located on the east side of Highway 95 and south of the railroad right-of-way (See No. 3 on Map B), described as:

A portion of and situated in the Southwest Quarter of the Southwest Quarter of the Northwest Quarter of Section 10, Township 3 North, Range 5 West, Boise Meridian, Owyhee County, Idaho, more particularly described as follows:

COMMENCING at the West Quarter Corner of the above-described Section 10, Township 3 North, Range 5 West; thence

South 88 44' East 363.30 feet to a point which is the REAL POINT OF BEGINNING; thence continue

South 88 44' East along the south Section line 349.52 feet to a point on the Railroad right of way; thence

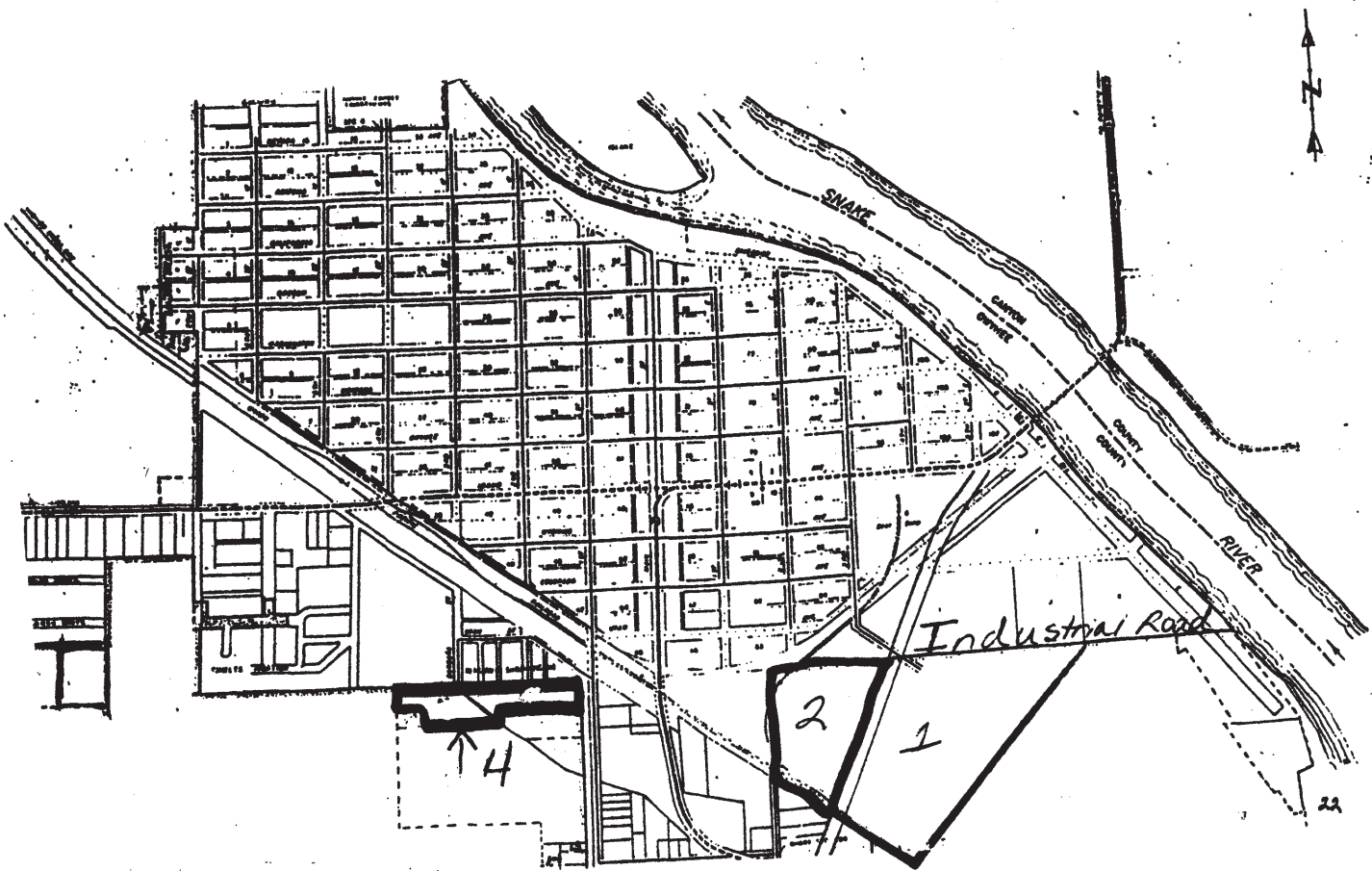
North 52 16' West along the Railroad right of way 345.51 feet to a point; thence along an arc of a 5,669.58 foot radius curve to the right 217.53 feet and the chord of this curve bears

South 20 30'24" West 217.52 feet to a point, which is the REAL POINT OF BEGINNING.

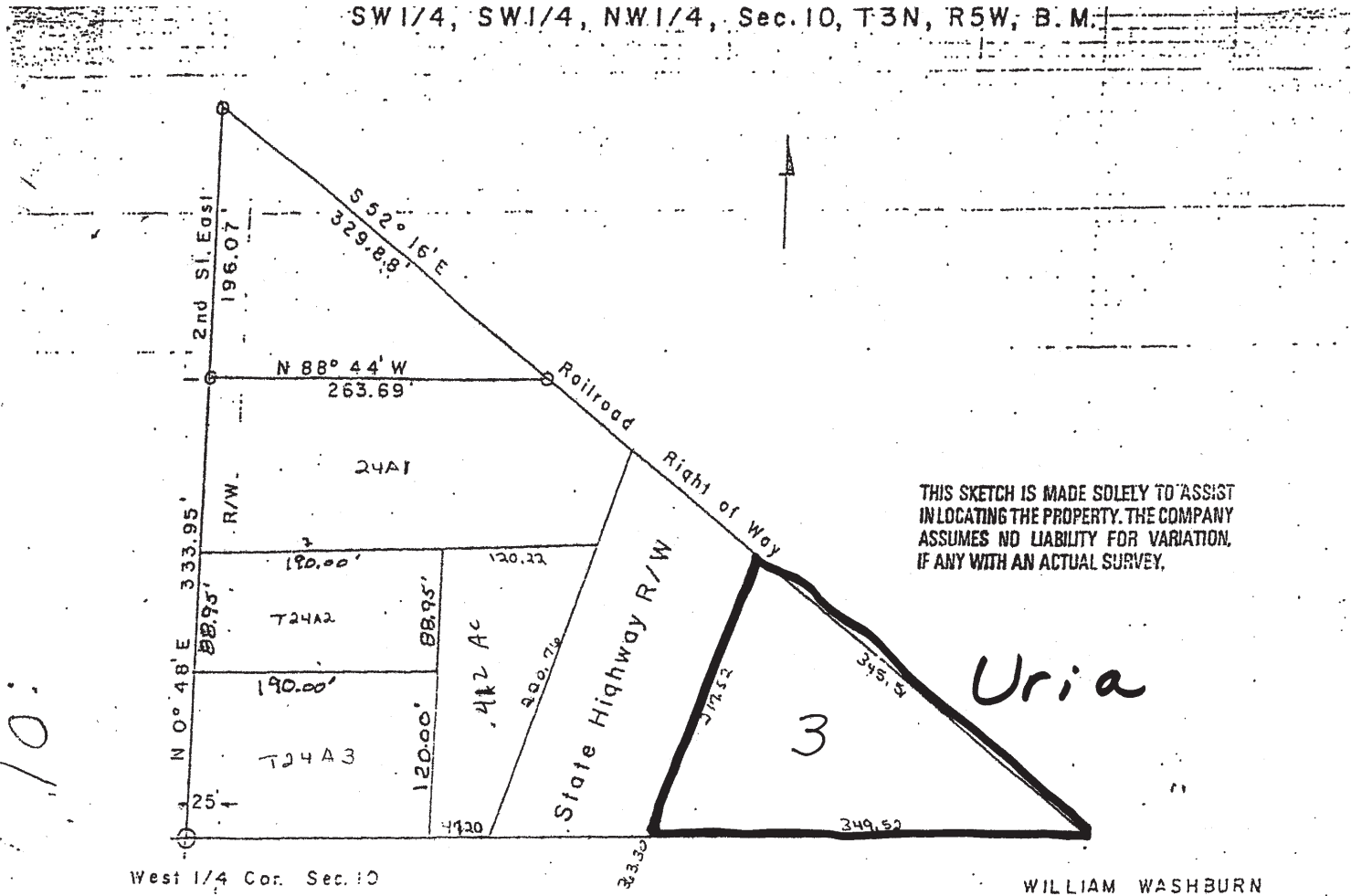
- 4. Homedale Middle School, located on Johnstone Road
- 5. Alan Mitchell (404 S. 1st St. W.) (Shown as part of No. 4 on Map A)
- 6. Emanuel Ramos (219 Barbara Street) (shown as part of No. 4 on Map A)
- 7. Toni Ross property (shown as part of No. 4 on Map A)

The public is invited to attend and offer input.

Susan Mansisidor, City Clerk
City of Homedale
8/9,16/06



MAP A



MAP B

The Owyhee Avalanche
Owyhee County's best source for local news!!

Public notices



NOTICE OF TRUSTEE’S SALE
TS No. 05-18805
Doc ID #00005417322005N
Title Order No. 5610769
Parcel No. RPA01200030120A

The following described property will be sold at public auction to the highest bidder, payable in lawful money of the United States, On the steps of the Owyhee County Courthouse located at the corner of Highway 78 and Hailey St., Murphy, Owyhee County, ID, on 11/08/2006 at 11:00 am, (recognized local time) for the purpose of foreclosing that certain Deed of Trust recorded 12/03/2001 as Instrument Number 238001 , and executed by Marcus B. Ellis and Deborah K Ellis, Husband and Wife , as Grantor(s), in favor of Mortgage Electronic Registration System, Inc., as Beneficiary, to ReconTrust Company, N.A., the Current Trustee of record, covering the following real property located in Owyhee County, state of Idaho: Lot 12 of Block 3 of Kershner subdivision to the city of Homedale, Owyhee County, Idaho, According to the official plat thereof on file and of record in the office of the recorder for Owyhee County, Idaho . The Trustee has no knowledge of a more particular description of the above referenced real property, but for purpose of compliance with Idaho Code, Section 60-113, the Trustee has been informed that the street address of, 202 South 2nd Street West, Homedale, ID 83628 is sometimes associated with said real property. Bidders must be prepared to tender the trustee the full amount of the bid at the sale in the form of cash, or a cashier’s check drawn on a state or federally insured savings institution. Said sale will be made without covenant or warranty, express or implied, regarding title, possession or encumbrances to

satisfy the obligation secured by and pursuant to the power of sale conferred in that certain Deed of Trust. The default for which this sale is to be made is: Failure to pay the monthly payment due 08/01/2005 of principal, interest and impounds and subsequent installments due thereafter; plus late charges, with interest currently accruing at 7.750 % per annum; together with all subsequent sums advanced by beneficiary pursuant to the terms and conditions of said Deed of Trust, and any supplemental modifications thereto. The principal balance owing as of this date on said obligation is \$ 56,088.28 , plus interest, costs and expenses actually incurred in enforcing the obligations thereunder and in this sale, together with any unpaid and/or accruing real property taxes, and/or assessments, attorneys’ fees, Trustees’ fees and costs, and any other amount advanced to protect said security, as authorized in the promissory note secured by the aforementioned Deed of Trust. Therefore, the Beneficiary elects to sell, or cause said trust property to be sold, to satisfy said obligation. Notice is hereby given that this firm is attempting to collect a debt and any information obtained will be used for that purpose, and that the debt may be disputed. The above grantors are named to comply with Section 45-1506(4)(a) Idaho Code. No representation is made that they are, or are not, presently responsible for this obligation. Dated: 03/10/2006 Name and Address of the Current Trustee is: ReconTrust Company, N.A., 177 Countrywide Way, LAN2-88, Lancaster, CA 80028-1821 Phone: (800) 281-8219 ReconTrust Company, N.A. Successor Trustee Rahmi Bernaldez, Assistant Secretary ASAP# 780249 7/19,26;8/2,9/06

HELP WANTED

Part time counter person needed, bi-lingual preferred. Apply @ NAPA Auto Parts, Homedale.

Full time delivery driver/ stock person needed, bi-lingual preferred. Apply @ NAPA Auto Parts, Homedale.

Outreach Associate Provides health related outreach activities in local labor camps. Req. exc communication skills and bilingual fluency (English/Spanish). Knowledge of farmworker issues and able to work flexible hrs. Send resume or apply at Terry Reilly Health Services, Attn. Outreach Coor, 211 16th Ave N, POB 9, Nampa, ID 83653 EOE

Dairyland Seed Co. is seeking a person to work in the Quality Control Lab for the fall harvest season (6 to 8 weeks) starting the week of August 21st. Must have basic computer skills and math skills. Need to pay attention to detail. Must be able to ascend and descend stairs. Complete application at 504 W. Idaho Ave., Homedale, ID

Truck driver with CDL for corn silage, Homedale area. 989-9520

Heavy equipment operator w/CDL & good driving record, light mechanic skills w/some general labor. Pay DOE. Call 573-5700 or fax resume to 208-337-3288 Homedale area.

Dairyland Seed has seasonal openings in the conditioning and packaging dept. Will work full-time for approx. 6 months. Must have forklift experience. Apply at 504 W. Idaho Ave., Homedale.

FT/PT – Curves world’s largest fitness organization looking for energetic, self-motivated, business minded person w/enthusiastic personality. Nutrition & health experience helpful. Coming to Homedale soon! Send resume to: juanita@fmtc.com or fax 208-452-7688

Dairyland Seed, an Alfalfa and Clover seed company, has a FT Administrative Assistant opening in the sales dept. Seeking a candidate with strong communication skills with prior administrative experience. Must have Excel and Word knowledge. Benefits include 401k, profit sharing, health, dental and life insurance. Fax resume to 337-4168 or complete application at 504 W. Idaho Ave., Homedale.

Jobs available now! Actors, extras, models! No exp. \$72-\$715 daily. Also need full time talent agent. Earn \$1700 to \$4000 month. Call 208-433-9511

THANK YOU

The Mary Prow family would like to express our many thanks for the beautiful flowers, donations of food and cards, the many donations of money to the Senior Center, the wonderful loving support and words of encouragement and comfort. Special thanks to Kathy at Homedale Care Center and thanks to the rest of the staff for Mary’s care during the past five months. Thank you. Verva “Jodi” and Frank Gilbert and family, Brenda Watts and family, and Larry and Darlene Prow and family.

I would like to send a big thank-you to all the people who helped contribute to my trip to the National high school rodeo finals in Springfield, Illinois. Without the support I wouldn’t have done what I did. I had a great time and it was a good experience. Thanks again. Bob & Wendy Olsen, Regan Lawson, Jim & Jamie Kirk, John Whitley & Deanna Everett, Larry & Carol Rudd, Bill and Donna Watterson, George & Jaci Miller, Kim McKenzie, Mike Matteson, Dr. Jeppe, Perfection Repair, Mary Martinat, Bill & Jalene Bruce, Dominator Performance Diesel and to my parents Kim and Tony and my sisters Kelsey and Toni Jo Martinat, my traveling partner Mark Gage and all my rodeo friends. Bryan Martinat



When will it be time... to advertise?

Don’t wait ‘til it’s too late!

The Owyhee Avalanche

Since 1865

Need Cash?

I CAN HELP!

- ❖ Buying Houses & Property
- ❖ Buying Contracts
- ❖ Loaning Money on Real Estate Equity
- ❖ Buying Estates

Call Mike Vance
208-389-9200

Rubber Stamps

Made to order

The Owyhee Avalanche

337-4861

Marsing

- Snake River Ranch, 78 +/- ac. Canyon County side \$946,800 **SOLD**
- Snake River Farm 100 +/- Acres \$700,000 **SOLD**

Murphy

- Alfalfa farm. 2 nice homes. Fronts public lands \$2,600,000 **SOLD**

Homedale

- Snake River 94 +/- Acres 1.25 +/- miles river **SOLD**

Wilder

- Snake River Frontage. 193 +/- acres ranch. \$1,200,000 **SOLD**

Agent Positions Available
Wanted: Riverfront Properties
Wanted: Good Farms & Ranches



www.knipeland.com

Eastern Oregon

- 113 +/- ac. Farm. North Powder \$349,000
- 356 +/- Ac. 2 homes/Pivot Unity, OR \$449,000 **SOLD**
- 368 +/- Ac.-Home-Richland. On North Powder River. \$795,000 **SOLD**
- 211 +/- Ac. Eagle Creek runs thru ranch. Richland \$987,500 **SOLD**
- 560 +/- Ac. Crop farm, pivots. Many buildings. \$1,400,000
- 120 +/- Ac. Ranch-6,000 SF home, Guest Home. Live water. Wal-lowa Mtn. Setting in Joseph, OR. \$3,950,000
- 633 +/- acres in timbered mtn. setting with irrigated meadows. Big game, home, outbuildings. \$3,750,000
- Meadows and evergreen groves on 440 +/- acres. Live streams and ponds. \$1,500,000
- Bordering National Forest. 703 +/- acres of big game and live water. \$949,000,

OTHERS... CALL FOR FREE CATALOG
CALL: 208/345-3163



And get results from your advertising.

- **81% of adults** read a community newspaper at least once a week.*
- **50% of adults** rely on the local newspaper as their primary news source.*
- **Only 16% watch** television for community information.*

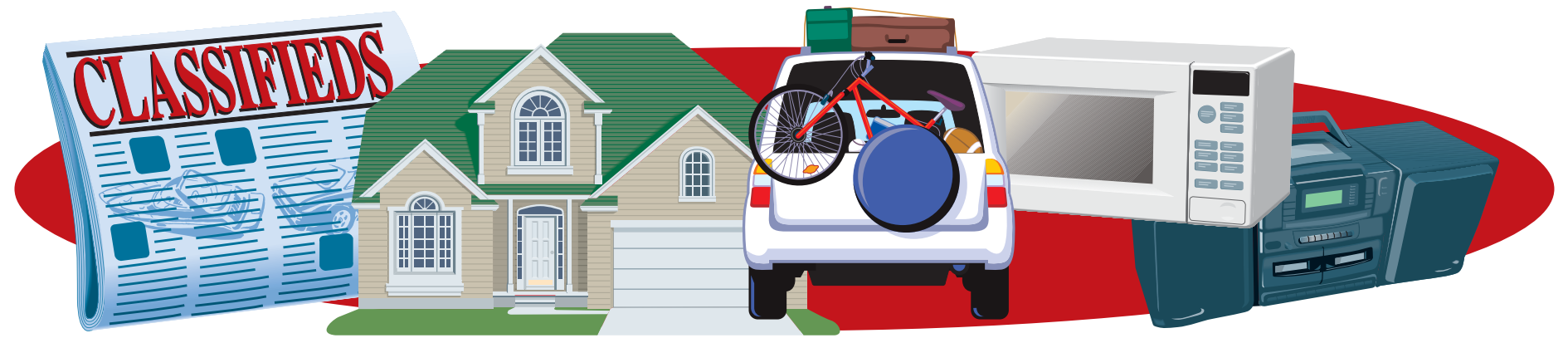
How will you reach your target audience?

The Owyhee Avalanche

337-4681

* — Survey conducted by the National Newspaper Association and the Center for Advanced Social Research at the Missouri School of Journalism at the University of Missouri-Columbia. Researchers surveyed adults 18 years old and up in markets with fewer than 100,000 residents.

**Buy it,
sell it,
trade it,
rent it...
in the
Classifieds!**



REAL ESTATE

Canyon Estates, nice view lot with good well, MH homes allowed on foundations \$65,000. Re/Max Advantage Pete McArthur 890-1658

4519 Market Rd., Homedale. New construction completely finished on 1.75 acres. Beautiful new home, 1831 sq. ft., 4 bdrm, split bdrm plan, 2 bath 2 car garage \$265,000. Re/Max Advantage Pete McArthur 890-1658

Fast Cash! Real Estate Equity Loans American Financial (208) 389-9200

.41 acre lot fronting Hwy 95 bypass in Homedale. Has City Sewer and water. Would make great location for buisness. Zoned commercial. **\$79,000, call me for details.**

Two 1 acre lots Near marsing. Two nice irrigated building lots in the country. Buy 1 or both. \$69,900 each.

9.61 Acres on Ustick Road Slightly sloped, would make good building lot. Currently an orchard. \$229,000

I have a buyer for "fixer uppers" in the Homedale, Marsing area.



KENT SIMON
HOMEDALE, IDAHO
337-4170 • CELL: 484-0075
www.BuyMOUNTAINVALLEY.COM

FARM & RANCH

Queen Quarter Horse Production Sale September 9th @ 1:00pm. Weanlings, yearlings, brood mares, broke geldings. Catalogs www.queenquarterhorse.com 1299 Mann Creek, Weiser, Idaho 208-549-0798

Alfalfa hay, grass hay, oat hay \$80-\$120 per ton small bales, straw \$2 per bale. 337-3936 or 941-9417

Custom swathing & stacking call Steve 541-339-4677 or 208-695-7939

Alfalfa seed, corn seed (\$59/bag), super winter hardy, farmer to farmer, many grasses, we deliver. Ray Odermott 208-465-5280 1-800-910-4101

FOR RENT

House for rent, inquire at 328 California in Homedale.

Boat & RV Storage, Marsing Storage 867-2466

Wanting to buy or sell a home or acreage? Think you can't be financed? We can help.



Aspen Realty, Inc.
Marsing, Idaho



Bob Brinegar 250-2207
Dixie Gerdes 899-2784

FOR SALE

Shepherd-mix puppies \$10 ea. Videos & DVDs \$1-\$3 ea. 27255 Peckham Road about one mile west of Wilder.

Sweet corn for sale 337-4407

Sheep, goats, chickens, ducks, guineas for sale or trade. 896-4671

1985 Buick Electra; 42-inch Craftsman riding lawn mower 17ph w/grass catcher, prices negotiable. 337-3761 lve msg.

2003 Honda XR100, like new \$1850; Oliver tractor 77 orchard model \$850, call for details 337-4480 or 880-4655

Microfiber couch & love seat, stain resistant, lifetime warranty, brand new in boxes. Retail \$1295. Must sell \$499. 208-888-1464

Bedroom set 7-piece cherry set. Brand new in boxes. List \$2450. Must sell \$450. 208-888-1464

Bed-queen pillowtop mattress set. Brand new, still in plastic, warranty. Retail \$599. Sell \$119! 208-921-6643

King-sized pillowtop mattress set. New, in bag, with warranty. List \$750. Sacrifice \$199. 208-921-6643

Cherry Sleigh bed. Solid wood. New in box. Value \$799. Sacrifice \$195. 208-888-1464

FOR SALE

Bedroom set, cherrywood, solid wood construction. Sleigh bed, 2 nightstands, dresser w/mirror, tall chest, TV armoire, dovetail drawers. Will sell all or part. Cost \$10,000, sell \$2,900. 208-362-7150

Dining set, cherrywood, 63" hutch & buffet, 78" table w/2 leaves, 6 curved back chairs. Dovetail drawers. Side server also available. Cost \$9,000 sell \$2,800 firm. 208-362-7150

Pool table, 8 ft. table, 1" slate, leather pockets, Aramith balls, acc. Pkg. included. New in box. Cost \$4,500 sell \$1450. 208-362-7150

Queen orthopedic pillow-top mattress & box. New in plastic. Cost \$400 sacrifice \$195. 208-919-3080

Mattress, king pillow-top & box. Never used. Still in factory wrapper. Cost \$550 sacrifice \$295. 208-919-3080

Used tractor parts 100's of salvaged farm tractors and combines. Nampa Tractor Salvage, 9055 Hwy 20, Nampa, ID 83687 (208) 467-4430

Roll ends: Great for packing material, building fires, lining birdcages or for your kids to doodle on. The Owyhee Avalanche, Homedale

VEHICLES

Accepting sealed bids for used automobiles (cash sale) until 5:00 pm, Friday, August 11, 2006. One 1994 Dodge Spirit, minimum bid \$900; one 1998 Ford Taurus, minimum bid \$1900; and one 2001 Ford F-150 Super Cab, 2WD P/U, minimum bid \$5000. Vehicles and maintenance records may be inspected at Southwest District Health, 920 Main St., Caldwell 83605. Call 455-5302 for inquiries.

1992 Chevy Suburban 2WD, has good tires, good brakes & good gas mileage \$2500 OBO 208-896-4227

1968 Chevy ¾ ton pick up, recent paint job, V8 350 engine, auto, good work truck/project \$950 OBO 482-6691

1993 F150 Ford Ext-Cab Long Box P.U., 4x4, 302-V8, Auto, AC, All Power Options w/tow package. \$4,500. OBO; Ford engine 1993 302 rebuilt fuel injected motor \$600. Call evenings 337-3149

2006 ATV's New 50cc, 110cc, 150cc, 250cc. Special prices!!! Call for details. DL#3024 208-896-5720

YARD SALE

Yard sale -Thurs/Fri/Sat 7am-3pm 131 W. California. Children toys & clothes, some antiques & adult clothing.

Sat. Aug. 12th 8am-? 226 E. Colorado Ave. Almost new nightstands & bar stools, 2 new overnighiter size luggage, louvered door & lots of good stuff. All clean & NO junk.

Rummage & bake food sale. Aug. 11 & 12 8am-3pm Wilder Methodist Church, 4th St. and B Ave.

Yard sale Good infant & toddler items plus much more. Aug. 11, 12, 13 - 9am-? 25969 Graphic Lane

FOUND

Found, family pet in Homedale. Please call 337-5975 or 250-4759 for further info.

WANTED

Wanted: gear box for 330 430 International baler, please call Alvin 482-7395

Wanted bull elk buck deer land owner tags for Unit 40. Will negotiate. 208-870-0124 ask for Don

SERVICES

Owyhee Mountain Lawn Care. Lawn mowing, trimming, clean up. Free estimates call Tyler 880-1573

Best price for on-site computer cleaning and repair. Call Tom or Colette at 899-9419 or 896-4676, Technical Computer.

Tim's Small Engine Repair: Complete servicing & repair available on lawnmowers, tillers, wheel-line motors, motorcycles, ATVs, all 2 & 4 cycle power equipment. Karcher pressure washer factory authorized repair center. 30916 Peckham Rd., 5 miles west of Wilder. 482-7461

Subscribe Today!

The Owyhee Avalanche

208-337-4681

Snake River Access



2 yr old 2100 sqft 4 bed 2.5 bath home on 3.4 acres, large 3 car garage, large yard, under ground sprinklers, pasture with buried main line, corrals, hot tub \$475,000 call Alan 989-8021



OFFICE: 896-5312
GEORGE WILSON: 573-6405
JOHN CONTI: 880-7829 • STAN CAPOUCH: 880-2414
BOB BRINEGAR: 250-2207 • LORI RASMUSSEN: 871-4502
View Properties At: www.idaholand4u.com

22 ACRES WITH 14 LOT PROPOSED SUB. in Wilder 1/2 mile to River Bend Golf Course and Snake River. \$475,000 MLS98239271

3 BDRM, 1 BATH IN HOMEDALE Mature landscaping, outside recently painted, Bathroom has new tub/enclosure and toilet. New carpet throughout home. \$112,500 MLS 98257042

2.5 ACRE BUILDING LOT ON THE SNAKE RIVER Pressurized irrigation, great view of the Owyhees. \$225,000 MLS 98257219

4.5 ACRE BUILDING LOT ON HWY 78 Panoramic view of valley and river. \$89,900 MLS 98250501

3 BEDROOM, 2 BATH HOME ON 5.6 ACRES Beautiful landscaping, fenced pasture w/ irrigation, 4-bay shop and garage, 58x30 steel barn/tack room, hay storage, 140x80 arena. Gorgeous view of the valley. \$324,500 MLS 98254865



Owyhee Realty
337-4634
402 U.S. Hwy 95 • Homedale
www.owyheerealty.com

BUILDING LOT – Country building lot (2.54 ac.) with great view of the Owyhees. Shared well with good water. Located on Allendale – Homedale Schools. \$120,000. Owyhee County Realty 337-4634.

BUILDING LOTS – Hard to find 3.76 acre parcel directly North of Sundance Park & within Homedale City limits. Great open area with view & full irrigation rights. Great area to build your new home & pasture for your animals. \$135,350. Owyhee County Realty 337-4634.

BUILDING LOTS – Spectacular view! Bring your horses & Build your Dream Home on this 6.16 ac. Elevated & sloping country acreage w/pressurized irrigation, vinyl fencing, paved road. Located off Ustick Rd. – Homedale Schools. \$315,000. - Owyhee County Realty 337-4634.

GREENLEAF – Extra nice 1329 sq. ft. 3 bed 2 bath home on lg. lot in quiet country sub. Fully fenced back yard, full auto irrigation. Includes window blinds, kitchen stove & refrigerator. \$139,900. Owyhee County Realty 337-4634.

REDUCED PRICE – Great investment opportunity. 3 homes on 2.72 acres on Graphic Lane. 2199 sq. ft. 4 bed 2 bath, newly remodeled home, plus 3 bed 2 bath m.f. home & addn'l home that could be used as rental. Carport & shop & storage sheds. \$340,900. Owyhee County Realty 337-4634.

HOMEDALE – 3 bed 2 bath w/heated – finished garage, fenced back yard, full auto irrigation. Lg. metal storage shed. Lots of extras. \$140,000. Owyhee County Realty 337-4634.

Gorgeous 3068 sq. ft. home located on Ustick on **5 ACRES**. 3 bed 3 bath 4 car finished garage. Rustic hickory cabinets, granite counters, beautiful rock fireplace, open ceiling w/log beam accents, wrap around porch/deck. ½ mile to Golf Course – Homedale Schools. See to appreciate. \$750,000. Owyhee County Realty 337-4634.

Great Business Opportunity!! Long established business – 8 Lane Bowling Alley plus Restaurant that seats 40+, plus banquet room that seats up to 60. \$250,000. Call Owyhee County Realty 337-4634.

Royal Vista Subdivision West of Homedale. (Lot 26 – 5.35 acres) and (Lot 25 – 4.67 acres) priced @ \$149,900. Features Great View, pressurized irrigation, phone, power & paved road access. Owyhee County Realty 337-4634.

Rare Find!! **FOR SALE** – Unique 14.78 acre Helton Island on Snake River w/fully furnished island home – plus .82 ac. Fully fenced lot with 100 ft. River Frontage on Morris Place w/ (28x67 4 car garage, plus apartment) w/river access to boat to Dream Island. Call Owyhee County Realty for addn'l information.

Lori Badiola
573-8456

Charlene Uranga
573-2975

Don't miss the...

Owyhee County 4-H and FFA



Livestock Sale

Noon - Saturday, August 12, 2006

The following businesses urge you to support
Owyhee County youth by bidding on their animals!

Pick Up The Pace

Homedale - 337-4040

Perfection Repair

Homedale - 337-5992

Snake River Lumber

Homedale - 337-5588

Paul's Markets

Homedale - 337-3919

Bowen & Parker

Homedale - 337-3271

Emerald Insurance

Homedale - 337-3161

Matteson's Owyhee Motors

Homedale - 337-4664

Owyhee Auto Parts NAPA

Homedale - 337-4668

ION Truck Plaza

Marsing - 896-4141

Owyhee Auto Parts NAPA

Marsing - 896-7815

Desert High Real Estate

Marsing - 896-4624

A Special Touch Homecare

Homedale - 337-5343

Campbell Tractor

Homedale - 337-3142

Homedale Chiropractic

Homedale - 337-4900

Auto Body By Alan

Homedale - 337-4837

Les Schwab Tire

Homedale - 337-3474

Snake River Co. LLC

Homedale - 337-3115

Filler King Co.

Homedale - 337-3134

Homedale Drug

Homedale - 337-3898

Sandbar Restaurant

Marsing - 896-4124

Pruett Tire

Marsing - 896-5824

Uria Pump & Excavation

Homedale - 337-3954

United Oil

Grand View - 834-2548

Marsing Hardware

Marsing - 896-4162

Alliance Title & Escrow Corp.

Homedale - 337-5585

Showalter Construction

Marsing - 896-4331

Homedale Drive In

Homedale - 337-4243

Farm Bureau - Wayne Hungate

Homedale - 337-4041

Snake River Mart

Marsing - 896-4222

Harvey's Auto & Towing

Marsing - 896-4643

